

Product datasheet for **TP301008**

WDR18 (NM_024100) Human Recombinant Protein

Product data:

Product Type: Recombinant Proteins
Description: Recombinant protein of human WD repeat domain 18 (WDR18), 20 µg
Species: Human
Expression Host: HEK293T
Expression cDNA Clone or AA Sequence: >RC201008 protein sequence
Red=Cloning site **Green**=Tags(s)

MAAPMEVAVCTDSAAPMWSCIVWELHSGANLLTYRGGQAGPRGLALLNGEYLLAAQLGKNYISAWELQRK
DQLQQKIMCPGPVTCLTASPNGLYVLAVAGVAESIHLWEVSTGNLLVILSRHYQDVSLQFTGDSSHFISGG
KDCLVLVWSLCSVLQADPSRIPAPRHVWSHHTLPITDLHCGFGGPLARVATSSLDQTVKLWEVSSGELL
SVLFDVSIMAVTMDLAEHMFCEGSEGSIFQVDLFTWPGQRERSFHEPQDAGKVFKGHRNQVTCLSVST
GSVLLSGSHDETVRLWDVQSKQCIRTVALKGPVTNAAILLAPVSMLSSDFRPSLPLPHFNKHLLGAEHGD
EPRHGGTLRLGLHQQGSEPSYLDRTQLQAVLCSTMEKSVLGGQDQLRVRVTELEDEVNLRKINRDLF
DFSTRFITRPAK

TRTRPLEQKLISEEDLAANDILDYKDDDDKV

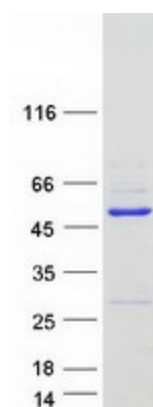
Tag: C-Myc/DDK
Predicted MW: 47.2 kDa
Concentration: >0.05 µg/µL as determined by microplate BCA method
Purity: > 80% as determined by SDS-PAGE and Coomassie blue staining
Buffer: 25 mM Tris-HCl, 100 mM glycine, pH 7.3, 10% glycerol
Preparation: Recombinant protein was captured through anti-DDK affinity column followed by conventional chromatography steps.
Note: For testing in cell culture applications, please filter before use. Note that you may experience some loss of protein during the filtration process.
Storage: Store at -80°C.
Stability: Stable for 12 months from the date of receipt of the product under proper storage and handling conditions. Avoid repeated freeze-thaw cycles.
RefSeq: [NP_077005](#)



[View online »](#)

Locus ID:	57418
UniProt ID:	Q9BV38
RefSeq Size:	1551
Cytogenetics:	19p13.3
RefSeq ORF:	1296
Synonyms:	lpi3; R32184_1
Summary:	This gene encodes a member of the WD repeat protein family. WD repeats are minimally conserved regions of approximately 40 amino acids typically bracketed by gly-his and trp-asp (GH-WD), which may facilitate formation of heterotrimeric or multiprotein complexes. Members of this family are involved in a variety of cellular processes, including cell cycle progression, signal transduction, apoptosis, and gene regulation. [provided by RefSeq, Jul 2008]

Product images:



Coomassie blue staining of purified WDR18 protein (Cat# TP301008). The protein was produced from HEK293T cells transfected with WDR18 cDNA clone (Cat# [RC201008]) using MegaTran 2.0 (Cat# [TT210002]).