

Product datasheet for **TP301003**

MSI2 (NM_138962) Human Recombinant Protein

Product data:

Product Type:	Recombinant Proteins
Description:	Recombinant protein of human musashi homolog 2 (Drosophila) (MSI2), transcript variant 1, 20 µg
Species:	Human
Expression Host:	HEK293T
Expression cDNA	>RC201003 protein sequence
Clone or AA Sequence:	Red=Cloning site Green=Tags(s)

MEANGSQGTSGSANDSQHDPGKMFIGGLSWQTSPDSL RDYFSKFGEIRECMVMRDPTTKRSRGFGFVTFADPASVDKVLGQPHHELD SKTIDPKVAFPRRAQPKMVT RTKKIFVGGLSANTVVEDVKQYFEQFGKVEDAMLMFDKTTNRHRGFGFVTFENEDVVEKVCEIHFHEINNMVECKKAQPKEVMFPPGTRGRARGLPYTMDAFLMGMGMLGYPNFVATYGRGYPGFAPSYGYQFPGF PAAAAYGPVAAA AAVAAARGSGSNPARPGGFPGANSPGPVADLYGPASQDSGVGN YISAASPQPGSGFGHGIAGPLIATAFTNGYH

SGPTRTRPLEQKLISEEDLAANDILDYKDDDDKV

Tag:	C-Myc/DDK
Predicted MW:	35 kDa
Concentration:	>0.05 µg/µL as determined by microplate BCA method
Purity:	> 80% as determined by SDS-PAGE and Coomassie blue staining
Buffer:	25 mM Tris-HCl, 100 mM glycine, pH 7.3, 10% glycerol
Preparation:	Recombinant protein was captured through anti-DDK affinity column followed by conventional chromatography steps.
Note:	For testing in cell culture applications, please filter before use. Note that you may experience some loss of protein during the filtration process.
Storage:	Store at -80°C.
Stability:	Stable for 12 months from the date of receipt of the product under proper storage and handling conditions. Avoid repeated freeze-thaw cycles.
RefSeq:	NP_620412
Locus ID:	124540



[View online »](#)

UniProt ID: [Q96DH6](#)

RefSeq Size: 1581

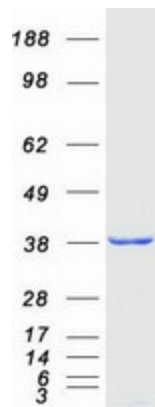
Cytogenetics: 17q22

RefSeq ORF: 984

Synonyms: MSI2H

Summary: This gene encodes an RNA-binding protein that is a member of the Musashi protein family. The encoded protein is transcriptional regulator that targets genes involved in development and cell cycle regulation. Mutations in this gene are associated with poor prognosis in certain types of cancers. This gene has also been shown to be rearranged in certain cancer cells. [provided by RefSeq, Apr 2016]

Product images:



Coomassie blue staining of purified MSI2 protein (Cat# TP301003). The protein was produced from HEK293T cells transfected with MSI2 cDNA clone (Cat# [RC201003]) using MegaTran 2.0 (Cat# [TT210002]).