

Product datasheet for **TP301000M**

C4orf14 (NOA1) (NM_032313) Human Recombinant Protein

Product data:

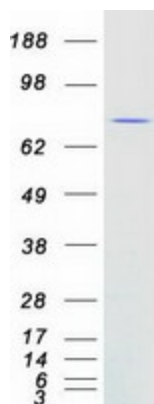
Product Type:	Recombinant Proteins
Description:	Recombinant protein of human chromosome 4 open reading frame 14 (C4orf14), 100 µg
Species:	Human
Expression Host:	HEK293T
Expression cDNA Clone or AA Sequence:	>RC201000 protein sequence Red =Cloning site Green =Tags(s)
	MLPARLPFRLLSLFLRGSAPTAARHGLREPLLERRCAAASSFQHSSSLGRELPHYDPVDTEGFGEGGDMQE RFLFPEYILDPEPQPTREKQLQELQQQEEEEERQQRQRREERRQQNLRARSREHPVVGHPDPALPPSGV N CSGCGAELHCQDAGVPGYLPREKFLRTAEADGGLARTVCQRCWLLSHHRRALRLQVSREQYLELVSAAALR RPGPSLVLYMVDLLDLPDALLPDLPALVGPKQLIVLGNKVDLLPQDAPGYRQLRERLWEDCARAGLLLA PGHQGPQRPVKDEPDGGENPNPPNWSRTVVRDVRLISAKTGYGVEELISALQRSWRYRGDVYLVGATNA G KSTLFNTLLES DYCTAKGSEAIDRATISWPWGTTNLLKFPICNPTPYRMFKRHQRLKKDSTQAEEDLSE QEQNQLNVLKKHGYVVGVRGRTFLYSEEQKDNIPFEFDADSLAFDMENDPVMGTHKSTKQVELTAQDVK D AHWFYDTPGITKENCILNLLTEKEVNIVLPTQSIVPRTFVLKPGMVLFLGAIGRIDFLQGNQSAWFTVVA SNILPVHITSLDRADALYQKHAGHTLLQIPMGGKERMAGFPPLVAEDIMLKEGLGASEAVADIKFSSAGW VSVTPNFKDRLHLRGYTPEGTVLTVRPPLLPYIVNIKGQRIKKS VAYKTKKPPSLMYNVRKKKGKINV TRTRPLEQKLISEEDLAANDILDYKDDDDKV
Tag:	C-Myc/DDK
Predicted MW:	78.3 kDa
Concentration:	>0.05 µg/µL as determined by microplate BCA method
Purity:	> 80% as determined by SDS-PAGE and Coomassie blue staining
Buffer:	25 mM Tris-HCl, 100 mM glycine, pH 7.3, 10% glycerol
Preparation:	Recombinant protein was captured through anti-DDK affinity column followed by conventional chromatography steps.



View online »

Note:	For testing in cell culture applications, please filter before use. Note that you may experience some loss of protein during the filtration process.
Storage:	Store at -80°C.
Stability:	Stable for 12 months from the date of receipt of the product under proper storage and handling conditions. Avoid repeated freeze-thaw cycles.
RefSeq:	NP_115689
Locus ID:	84273
UniProt ID:	Q8NC60
RefSeq Size:	2307
Cytogenetics:	4q12
RefSeq ORF:	2094
Synonyms:	C4orf14; hAtNOS1; hNOA1; mAtNOS1; MTG3
Summary:	The protein encoded by this gene is a nuclear-encoded GTPase that functions in the mitochondrion. Upon translation, this protein is imported into the nucleus and then into the nucleolus before being exported to the mitochondrion. The encoded protein is required for oxygen-dependent regulation of mitochondrial respiratory complexes and for mitochondrial protein synthesis. [provided by RefSeq, Dec 2015]

Product images:



Coomassie blue staining of purified NOA1 protein (Cat# [TP301000]). The protein was produced from HEK293T cells transfected with NOA1 cDNA clone (Cat# [RC201000]) using MegaTran 2.0 (Cat# [TT210002]).