

## Product datasheet for **TP300987M**

### SCNM1 (NM\_024041) Human Recombinant Protein

#### Product data:

**Product Type:** Recombinant Proteins

**Description:** Recombinant protein of human sodium channel modifier 1 (SCNM1), 100 µg

**Species:** Human

**Expression Host:** HEK293T

**Expression cDNA Clone or AA Sequence:** >RC200987 protein sequence  
**Red**=Cloning site **Green**=Tags(s)

MSFKREGDDWSQLNVLKRRVGDLLASYIPEDEALMLRDGRFACAICPHRPVLDLAMLTAHRAGKKHLS  
SLQLFYGKKQPGKERKQNPKHQNELRREETKAEAPLLTQTRLITQSALHRAPHYNSCCRRKYRPEAPGPS  
VLSLSPMPPEVKLQSGKISREPEPAAGPQAEESATVSAPAPMSPTRRRALDHYLTRSSGWIPDGRGRWV  
KDENVFDSDEEPPDLPLD

**TRTRPLEQKLISEEDLAANDILDYKDDDDKV**

**Tag:** C-Myc/DDK

**Predicted MW:** 25.8 kDa

**Concentration:** >0.05 µg/µL as determined by microplate BCA method

**Purity:** > 80% as determined by SDS-PAGE and Coomassie blue staining

**Buffer:** 25 mM Tris-HCl, 100 mM glycine, pH 7.3, 10% glycerol

**Preparation:** Recombinant protein was captured through anti-DDK affinity column followed by conventional chromatography steps.

**Note:** For testing in cell culture applications, please filter before use. Note that you may experience some loss of protein during the filtration process.

**Storage:** Store at -80°C.

**Stability:** Stable for 12 months from the date of receipt of the product under proper storage and handling conditions. Avoid repeated freeze-thaw cycles.

**RefSeq:** [NP\\_076946](#)

**Locus ID:** 79005

**UniProt ID:** [Q9BWG6](#)



[View online >](#)

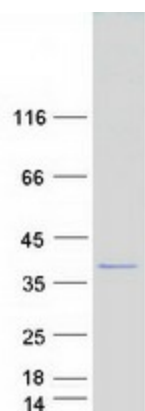
RefSeq Size: 2036

Cytogenetics: 1q21.3

RefSeq ORF: 690

**Summary:** SCNM1 is a zinc finger protein and putative splicing factor. In mice, Scnm1 modifies phenotypic expression of Scn8a (MIM 600702) mutations (Buchner et al., 2003 [PubMed 12920299]).[supplied by OMIM, Oct 2009]

### Product images:



Coomassie blue staining of purified SCNM1 protein (Cat# [TP300987]). The protein was produced from HEK293T cells transfected with SCNM1 cDNA clone (Cat# [RC200987]) using MegaTran 2.0 (Cat# [TT210002]).