

Product datasheet for **TP300985L**

TMEM38A (NM_024074) Human Recombinant Protein

Product data:

Product Type: Recombinant Proteins

Description: Recombinant protein of human transmembrane protein 38A (TMEM38A), 1 mg

Species: Human

Expression Host: HEK293T

Expression cDNA Clone or AA Sequence: >RC200985 protein sequence
Red=Cloning site **Green**=Tags(s)

MELLSALS LGELALSFSRVPLFPVFDLSYFIVSILYLYKYEPAVELSRRHPIASWLCAMLHCFGSYILAD
LLLGEPLIDYFSNNSILLASAVWYLIFFCPLDLFYKVCVCFPLPVKLI FVAMKEVVRVVKI AVGIHHAHHH
YHHGWVMIATGWVKGSGVALMSNFEQLLRGVWKPETNEILHMSFPTKASLYGAILFTLQQTRWLPVSKA
SLIFITLFMVSCVKVFLTATHSHSSPFDAL EGYICPVLFGSACGGDHHHDNHGGSHSGGGPGAQHSAMPA
KSKEELSEGSRKKKAKKAD

TRTRPLEQKLISEEDLAANDILDYKDDDDKV

Tag: C-Myc/DDK

Predicted MW: 33.1 kDa

Concentration: >0.05 µg/µL as determined by microplate BCA method

Purity: > 80% as determined by SDS-PAGE and Coomassie blue staining

Buffer: 25 mM Tris-HCl, 100 mM glycine, pH 7.3, 10% glycerol

Preparation: Recombinant protein was captured through anti-DDK affinity column followed by conventional chromatography steps.

Note: For testing in cell culture applications, please filter before use. Note that you may experience some loss of protein during the filtration process.

Storage: Store at -80°C.

Stability: Stable for 12 months from the date of receipt of the product under proper storage and handling conditions. Avoid repeated freeze-thaw cycles.

RefSeq: [NP_076979](#)

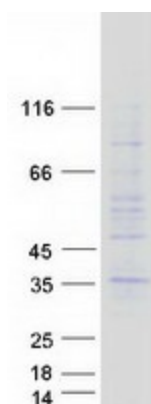
Locus ID: 79041



[View online »](#)

| | |
|-------------------|--|
| UniProt ID: | Q9H6F2 |
| RefSeq Size: | 1639 |
| Cytogenetics: | 19p13.11 |
| RefSeq ORF: | 897 |
| Synonyms: | TRIC-A; TRICA |
| Summary: | Monovalent cation channel required for maintenance of rapid intracellular calcium release. May act as a potassium counter-ion channel that functions in synchronization with calcium release from intracellular stores.[UniProtKB/Swiss-Prot Function] |
| Protein Families: | Transmembrane |

Product images:



Coomassie blue staining of purified TMEM38A protein (Cat# [TP300985]). The protein was produced from HEK293T cells transfected with TMEM38A cDNA clone (Cat# [RC200985]) using MegaTran 2.0 (Cat# [TT210002]).