

Product datasheet for **TP300956M**

EFHD1 (NM_025202) Human Recombinant Protein

Product data:

Product Type: Recombinant Proteins

Description: Recombinant protein of human EF-hand domain family, member D1 (EFHD1), 100 µg

Species: Human

Expression Host: HEK293T

Expression cDNA Clone or AA Sequence: >RC200956 protein sequence
Red=Cloning site **Green**=Tags(s)

MASEELACKLERRLRREEAEESGPQLAPLGAPAPEPKPEPEPPARAPTASADAELSAQLSRRLDINEGAA
RPRRCRVFNPYTEFPEFSRRLIKDLESMFKLYDAGRDFIDLMELKLMMEKLGAPQTHLGLKSMIKEVDE
DFDGKLSFRELLIFHKAAAAGELQEDSGLMALAKLSEIDVALEGVKGAKNFFFEAKVQALSSASKFEALK
AEQDERKREEEERRLRQAAFQKLKANFNT

TRTRPLEQKLISEEDLAANDILDYKDDDDKV

Tag: C-Myc/DDK

Predicted MW: 26.7 kDa

Concentration: >0.05 µg/µL as determined by microplate BCA method

Purity: > 80% as determined by SDS-PAGE and Coomassie blue staining

Buffer: 25 mM Tris-HCl, 100 mM glycine, pH 7.3, 10% glycerol

Preparation: Recombinant protein was captured through anti-DDK affinity column followed by conventional chromatography steps.

Note: For testing in cell culture applications, please filter before use. Note that you may experience some loss of protein during the filtration process.

Storage: Store at -80°C.

Stability: Stable for 12 months from the date of receipt of the product under proper storage and handling conditions. Avoid repeated freeze-thaw cycles.

RefSeq: [NP_079478](#)

Locus ID: 80303

UniProt ID: [Q9BUP0](#)

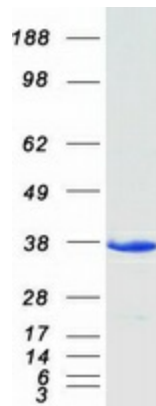


[View online »](#)

RefSeq Size:	2000
Cytogenetics:	2q37.1
RefSeq ORF:	717
Synonyms:	MST133; MSTP133; PP3051; SWS2

Summary: This gene encodes a member of the EF-hand super family of calcium binding proteins, which are involved in a variety of cellular processes including mitosis, synaptic transmission, and cytoskeletal rearrangement. The protein encoded by this gene is composed of an N-terminal disordered region, proline-rich elements, two EF-hands, and a C-terminal coiled-coil domain. This protein has been shown to associate with the mitochondrial inner membrane, and in HeLa cells, acts as a novel mitochondrial calcium ion sensor for mitochondrial flash activation. Alternative splicing results in multiple transcript variants. [provided by RefSeq, Jul 2016]

Product images:



Coomassie blue staining of purified EFHD1 protein (Cat# [TP300956]). The protein was produced from HEK293T cells transfected with EFHD1 cDNA clone (Cat# [RC200956]) using MegaTran 2.0 (Cat# [TT210002]).