

## Product datasheet for TP300951M

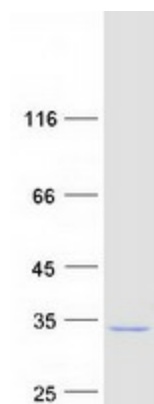
### LRRC61 (NM\_023942) Human Recombinant Protein

#### Product data:

|                                       |   |
|---------------------------------------|---|
| Product Type:                         | Recombinant Proteins  |
| Description:                          | Recombinant protein of human leucine rich repeat containing 61 (LRRC61), transcript variant 2, 100 µg   |
| Species:                              | Human   |
| Expression Host:                      | HEK293T   |
| Expression cDNA Clone or AA Sequence: | >RC200951 protein sequence<br><span style="color: red;">Red</span> =Cloning site <span style="color: green;">Green</span> =Tags(s)<br><br>MDPPAEKPGEAGGLQITPQLLKSRGTGEFSLESILLKLRGLGLADLGCLGECLGLEWLDLSGNALTHLGP<br>LASLRQLAVLNVSNNRLTGLEPLATCENLQSLNAAGNLLATPGQLQCLAGLPCLEYLRRLRDPLARLSNPL<br>CANPSYWAAVRELLPGLKVIDGERVIGRGSEFYQLCRDLDSLRPSSSPGPRATEAQPWVEPGYWESWPS<br>RSSSILEEACRQFQDTLQECWDLDRQASDSLAQAEQVLSSAGPTSSFVF<br><br><span style="color: red;">TR</span> <span style="color: green;">TRPLEQKLISEEDLAANDILDYKDDDDKV</span> |
| Tag:                                  | C-Myc/DDK   |
| Predicted MW:                         | 27.8 kDa  |
| Concentration:                        | >0.05 µg/µL as determined by microplate BCA method  |
| Purity:                               | > 80% as determined by SDS-PAGE and Coomassie blue staining   |
| Buffer:                               | 25 mM Tris-HCl, 100 mM glycine, pH 7.3, 10% glycerol  |
| Preparation:                          | Recombinant protein was captured through anti-DDK affinity column followed by conventional chromatography steps.  |
| Note:                                 | For testing in cell culture applications, please filter before use. Note that you may experience some loss of protein during the filtration process.  |
| Storage:                              | Store at -80°C.   |
| Stability:                            | Stable for 12 months from the date of receipt of the product under proper storage and handling conditions. Avoid repeated freeze-thaw cycles.   |
| RefSeq:                               | <u><a href="#">NP_076431</a></u>  |
| Locus ID:                             | 65999   |


[View online »](#)

|               |               |
|---------------|---------------|
| UniProt ID:   | <u>Q9BV99</u> |
| RefSeq Size:  | 1809          |
| Cytogenetics: | 7q36.1        |
| RefSeq ORF:   | 777           |
| Synonyms:     | HSPC295       |

**Product images:**


Coomassie blue staining of purified LRRC61 protein (Cat# [TP300951]). The protein was produced from HEK293T cells transfected with LRRC61 cDNA clone (Cat# [RC200951]) using MegaTran 2.0 (Cat# [TT210002]).