

## Product datasheet for **TP300948M**

### MEPCE (NM\_019606) Human Recombinant Protein

#### Product data:

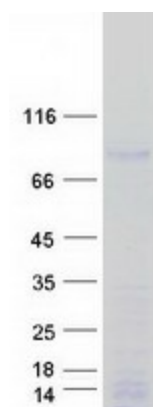
<b>Product Type:</b>	Recombinant Proteins
<b>Description:</b>	Recombinant protein of human methylphosphate capping enzyme (MEPCE), 100 µg
<b>Species:</b>	Human
<b>Expression Host:</b>	HEK293T
<b>Expression cDNA Clone or AA Sequence:</b>	>RC200948 protein sequence <b>Red</b> =Cloning site <b>Green</b> =Tags(s)
	<p>MIEMAAEKEPFLVPAPPPPLKDESGGGGGPTVPPHQEAASGELRGGTERGPGRCAPSAGSPAAAVGRES GAAATSSSGPQAQQHRGGGPQAQSHGEARLSDPPGRAAPPDVGEERRGGGGTELGPAPPRPRNGYQPHR PPGGGGGKRRNSCNVGGGGGGFKHPAFKRRRRVNSDCDSVLPNLFLLGGNIFDPLNLNSLLDEEVSRTL AETPKSSPLPAKGRDPVEILIPKDITDPLSLNTCTDEGHVVLASPLKTGRKRHRHRGQHHQQQAAGGSE SHPVPPTAPLTPLLHGEASQQPRHRGQNRDAPQPYELNTAINCRDEVSPALQGPSGLSAPPAAS VISAPSSSSRHRKRRRTSSKSEAGARGGGQGSKEKGRGSWGGRHHHHHPLPAAGFKKQQRKFQYGN YYGYRNPSCEDGRLRVLKPEWFRGRDVLDLGCNVGHLLTSIACKWGPSRMVGLDIDSRLIHSARQNI LSEELRPPQTLEGDPGAEGEETTTVRKRSCFPASLTASRGPIAAPQVPLDGADTSVFPNNVVFVTGNY VLDRDDLVEAQTPEYDVLCLSLTKWVHLNWGDEGLKRMFRRIYRHLRPGGILVLEPQPWSSYGRKRT LTIYKNYYRIQLKPEQFSSYLTPDVGFSYELVATPHNTSKGFQRPVYLFHKARSPSH</p> <p><b>TRTRPLEQKLISEEDLAANDILDYKDDDDKV</b></p>
<b>Tag:</b>	C-Myc/DDK
<b>Predicted MW:</b>	74.2 kDa
<b>Concentration:</b>	>0.05 µg/µL as determined by microplate BCA method
<b>Purity:</b>	> 80% as determined by SDS-PAGE and Coomassie blue staining
<b>Buffer:</b>	25 mM Tris-HCl, 100 mM glycine, pH 7.3, 10% glycerol
<b>Preparation:</b>	Recombinant protein was captured through anti-DDK affinity column followed by conventional chromatography steps.
<b>Note:</b>	For testing in cell culture applications, please filter before use. Note that you may experience some loss of protein during the filtration process.
<b>Storage:</b>	Store at -80°C.



[View online »](#)

<b>Stability:</b>	Stable for 12 months from the date of receipt of the product under proper storage and handling conditions. Avoid repeated freeze-thaw cycles.
<b>RefSeq:</b>	<u>NP_062552</u>
<b>Locus ID:</b>	56257
<b>UniProt ID:</b>	<u>Q7L2J0</u>
<b>RefSeq Size:</b>	3047
<b>Cytogenetics:</b>	7q22.1
<b>RefSeq ORF:</b>	2067
<b>Synonyms:</b>	BCDIN3
<b>Summary:</b>	S-adenosyl-L-methionine-dependent methyltransferase that adds a methylphosphate cap at the 5'-end of 7SK snRNA, leading to stabilize it.[UniProtKB/Swiss-Prot Function]
<b>Protein Families:</b>	Druggable Genome

### Product images:



Coomassie blue staining of purified MEPCE protein (Cat# [TP300948]). The protein was produced from HEK293T cells transfected with MEPCE cDNA clone (Cat# [RC200948]) using MegaTran 2.0 (Cat# [TT210002]).