

Product datasheet for **TP300948L**

MEPCE (NM_019606) Human Recombinant Protein

Product data:

| | |
|---------------------------------------|------------------------------------------------------------------------------|
| Product Type: | Recombinant Proteins |
| Description: | Recombinant protein of human methylphosphate capping enzyme (MEPCE), 1 mg |
| Species: | Human |
| Expression Host: | HEK293T |
| Expression cDNA Clone or AA Sequence: | >RC200948 protein sequence Red =Cloning site Green =Tags(s) |

MIEMAAEKEPFLVPAPPPPLKDESGGGGGPTVPPHQEAASGELRGGTERGPGRCAPSAGSPAAAVGRESP
GAAATSSSGPQAQQHRGGGPQAQSHGEARLSDPPGRAAPPDVGEERRGGGGTELGPAPPRPRNGYQPHR
PPGGGGGKRRNSCNVGGGGGGFKHPAFKRRRRVNSDCDSVLPNLFLLGGNIFDPLNLNSLLDEEVSRTL
AETPKSSPLPAKGRDPVEILIPKDITDPLSLNTCTDEGHVVLASPLKTGRKRHRHRGQHHQQQAAGGSE
SHPVPPTAPLTPLLHGEASQQPRHRGQNRDAPQPYELNTAINCRDEVSPALQGPSGLSAPPAAS
VISAPSSSSRHRKRRRTSSKSEAGARGGGQGSKEKGRGSWGGRHHHHHPLPAAGFKKQQRKFQYGN
YYGYRNPSCEDGRLRVLKPEWFRGRDVLDLGCNVGHLLSIACKWGPSRMVGLDIDSRLIHSARQNI
LSEELRPPQTLEGDPGAEGEETTTVRKRSCFPASLTASRGPIAAPQVPLDGADTSVFPNNVVFVTGNY
VLDRDDLVEAQTPEYDVLCLSLTKWVHLNWGDEGLKRMFRRIYRHLRPGGILVLEPQPWSSYGRKRTLT
ETIYKNYYRIQLKPEQFSSYLTPDVGFSYELVATPHNTSKGFQRPVYLFHKARSPSH

TRTRPLEQKLISEEDLAANDILDYKDDDDKV

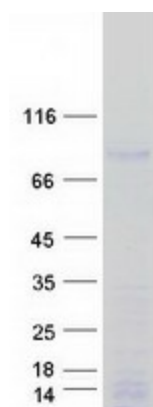
| | |
|----------------|------------------------------------------------------------------------------------------------------------------------------------------------------|
| Tag: | C-Myc/DDK |
| Predicted MW: | 74.2 kDa |
| Concentration: | >0.05 µg/µL as determined by microplate BCA method |
| Purity: | > 80% as determined by SDS-PAGE and Coomassie blue staining |
| Buffer: | 25 mM Tris-HCl, 100 mM glycine, pH 7.3, 10% glycerol |
| Preparation: | Recombinant protein was captured through anti-DDK affinity column followed by conventional chromatography steps. |
| Note: | For testing in cell culture applications, please filter before use. Note that you may experience some loss of protein during the filtration process. |
| Storage: | Store at -80°C. |



[View online »](#)

| | |
|--------------------------|-------------------------------------------------------------------------------------------------------------------------------------------------------------------------|
| Stability: | Stable for 12 months from the date of receipt of the product under proper storage and handling conditions. Avoid repeated freeze-thaw cycles. |
| RefSeq: | <u>NP_062552</u> |
| Locus ID: | 56257 |
| UniProt ID: | <u>Q7L2J0</u> |
| RefSeq Size: | 3047 |
| Cytogenetics: | 7q22.1 |
| RefSeq ORF: | 2067 |
| Synonyms: | BCDIN3 |
| Summary: | S-adenosyl-L-methionine-dependent methyltransferase that adds a methylphosphate cap at the 5'-end of 7SK snRNA, leading to stabilize it.[UniProtKB/Swiss-Prot Function] |
| Protein Families: | Druggable Genome |

Product images:



Coomassie blue staining of purified MEPCE protein (Cat# [TP300948]). The protein was produced from HEK293T cells transfected with MEPCE cDNA clone (Cat# [RC200948]) using MegaTran 2.0 (Cat# [TT210002]).