

Product datasheet for **TP300948**

MEPCE (NM_019606) Human Recombinant Protein

Product data:

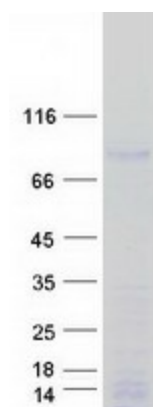
Product Type:	Recombinant Proteins
Description:	Recombinant protein of human methylphosphate capping enzyme (MEPCE), 20 µg
Species:	Human
Expression Host:	HEK293T
Expression cDNA Clone or AA Sequence:	>RC200948 protein sequence Red =Cloning site Green =Tags(s)
	<p>MIEMAAEKEPFLVPAPPPPLKDESGGGGGPTVPPHQEAASGELRGGTERGPGRCAPSAGSPAAAVGRESP GAAATSSSGPQAQQHRGGGPQAQSHGEARLSDPPGRAAPPDVGEERRGGGGTELGPAPPRPRNGYQPHR PPGGGGGKRRNSCNVGGGGGGFKHPAFKRRRRVNSDCDSVLPNLFLLGGNIFDPLNLNSLLDEVSRTL AETPKSSPLPAKGRDPVEILIPKDITDPLSLNTCTDEGHVVLASPLKTGRKRHRHRGQHHQQQAAGGSE SHPVPPTAPLTPLLHGEASQQPRHRGQNRDAPQPYELNTAINCRDEVSPALQGPSGLSAPPAAS VISAPSSSSRHRKRRRTSSKSEAGARGGGQGSKEKGRGSWGGRHHHHHPLPAAGFKKQQRKFQYGN YYGYRNPSCEDGRLRVLKPEWFRGRDVLDLGCNVGHLLTSLACKWGPSRMVGLDIDSRLIHSARQ NIRHYLSEELRLPPQTLEGDPGAEGEETTTVRKRSCFPASLTASRGPIAAPQVPLDGADTSVFPN NVFVTGNYVLDRDDLVLEAQTPEYDVLCLSLTKWVHLNWGDEGLKRMFRRIYRHLRPGGILVLEP QPWSSYGRKRTLTETIYKNYYRIQLKPEQFSSYLTSFVDFSSYELVATPHNTSKGFQRPVYLFHKAR SPSH</p> <p>TRTRPLEQKLISEEDLAANDILDYKDDDDKV</p>
Tag:	C-Myc/DDK
Predicted MW:	74.2 kDa
Concentration:	>0.05 µg/µL as determined by microplate BCA method
Purity:	> 80% as determined by SDS-PAGE and Coomassie blue staining
Buffer:	25 mM Tris-HCl, 100 mM glycine, pH 7.3, 10% glycerol
Preparation:	Recombinant protein was captured through anti-DDK affinity column followed by conventional chromatography steps.
Note:	For testing in cell culture applications, please filter before use. Note that you may experience some loss of protein during the filtration process.
Storage:	Store at -80°C.



[View online >](#)

Stability:	Stable for 12 months from the date of receipt of the product under proper storage and handling conditions. Avoid repeated freeze-thaw cycles.
RefSeq:	NP_062552
Locus ID:	56257
UniProt ID:	Q7L2J0
RefSeq Size:	3047
Cytogenetics:	7q22.1
RefSeq ORF:	2067
Synonyms:	BCDIN3
Summary:	S-adenosyl-L-methionine-dependent methyltransferase that adds a methylphosphate cap at the 5'-end of 7SK snRNA, leading to stabilize it.[UniProtKB/Swiss-Prot Function]
Protein Families:	Druggable Genome

Product images:



Coomassie blue staining of purified MEPCE protein (Cat# TP300948). The protein was produced from HEK293T cells transfected with MEPCE cDNA clone (Cat# [RC200948]) using MegaTran 2.0 (Cat# [TT210002]).