

## Product datasheet for TP300946

### ISG20L2 (NM\_030980) Human Recombinant Protein

#### Product data:

Product Type:	Recombinant Proteins
Description:	Recombinant protein of human interferon stimulated exonuclease gene 20kDa-like 2 (ISG20L2), 20 µg
Species:	Human
Expression Host:	HEK293T
Expression cDNA Clone or AA Sequence:	>RC200946 protein sequence Red=Cloning site Green=Tags(s)

MSTLLLNLDLDFGEPKKALEGNAKHRNFVKKRRLLERRGFLSKKNQPPSKAPKLHSEPSKKGETPTVDGT  
WKTPSFPKKKTAASSNGSGQLDKKAAVSWLTPAPSKKADSVAAKVDLLGEFQSALPKINSHPTRSQKKS  
SQKSSKKNHPQKNAPQNSTQAHSNKCSGASQKLPRKMVAIDCEMVGTPKGVSSSLARCSIVNYNGDV  
LYDEYILPPCHIVDYRTRWSGIRKQHMVNATPFKIARGQILKILTGKIVVGHAIHNDFKALQYFHPKSLT  
RDTSHIPPLNRKADCPENATMSLKHLLTKLLNRDIQVGKSGHSSVEDAQAATMELYKLVVEVEWEEHLARNP  
PTD

TRTRPLEQKLISEEDLAANDILDYKDDDDKV

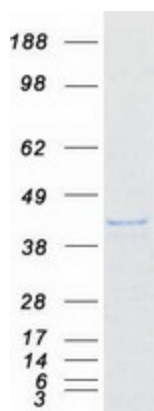
Tag:	C-Myc/DDK
Predicted MW:	39 kDa
Concentration:	>0.1 µg/µL as determined by microplate BCA method
Purity:	> 80% as determined by SDS-PAGE and Coomassie blue staining
Buffer:	25 mM Tris-HCl, 100 mM glycine, pH 7.3, 10% glycerol
Preparation:	Recombinant protein was captured through anti-DDK affinity column followed by conventional chromatography steps.
Note:	For testing in cell culture applications, please filter before use. Note that you may experience some loss of protein during the filtration process.
Storage:	Store at -80°C.
Stability:	Stable for 12 months from the date of receipt of the product under proper storage and handling conditions. Avoid repeated freeze-thaw cycles.
RefSeq:	<a href="#">NP_112242</a>



[View online »](#)

Locus ID:	81875
UniProt ID:	<a href="#">Q9H9L3</a>
RefSeq Size:	2051
Cytogenetics:	1q23.1
RefSeq ORF:	1059
Synonyms:	FLJ12671
Summary:	This gene encodes a 3'-5' exoribonuclease that may be involved in the processing of the 12S pre-rRNA. Pseudogenes have been identified on chromosomes 6 and 11. [provided by RefSeq, Dec 2014]

### Product images:



Coomassie blue staining of purified ISG20L2 protein (Cat# TP300946). The protein was produced from HEK293T cells transfected with ISG20L2 cDNA clone (Cat# [RC200946]) using MegaTran 2.0 (Cat# [TT210002]).