

Product datasheet for **TP300940L**

Glycogen synthase 1 (GYS1) (NM_002103) Human Recombinant Protein

Product data:

Product Type:	Recombinant Proteins
Description:	Recombinant protein of human glycogen synthase 1 (muscle) (GYS1), 1 mg
Species:	Human
Expression Host:	HEK293T
Expression cDNA Clone or AA Sequence:	>RC200940 protein sequence Red =Cloning site Green =Tags(s)

MPLNRTLMSSSLPGLEDWEDEFDLENVAFLFEVAWEVANKVGGIYTVLQTKAKVTGDEWGDNYFLVGPYTE
QGVRTQVELLEAPTALKRTLDSMNSKGCKVYFGRWLIIEGGPLWLLDVGASAWALERWKGELWDTCNIG
VPWYDREANDAVLFGFLTTFWFLGFLAQSEEKPHVVAHFHEWLAGVGLCLCRARRLPVATIFTTTHATLLG
RYLCAGAVDFYNNLENFNVDKEAGERQIYHRYCMERAAAHCAHVFTTVSQITAIEAQHLLKRKPDIVTPN
GLNVKKFSAMHEFQNLHAQSKARIQEFVRGHFYGHLDNFNDKTLTYFFIAGRYEFSNKGADVFLEALARLN
YLLRVNGSEQTWVAFFIMPARTNNFNVETLKGQAVRKQLWDTANTVKEKFRKLYESLLVGSPLDMNKML
DKEDFTMMKRAIFATQRQSFPPVCTHNMLDDSSDPILTTIRRIGLFNSSADRVKVIHFPEFLSSTSPLLP
VDYEEFVRGCHLGVFSPYEPWGYTPAECTVMGIPSISTNLSGFGCFMEEHIADPSAYGIYILDRRFRSL
DDSCSQLTSFLYSFCQQSRRQRRIQRNRTERLSDLLDWKYLGRYYMSARHMALSKAFPEHFTYEPNEADA
AQGYRYPASVPPSPSLSRHSSPHQSEDEEDPRNGPLEEDGERYDEDEEAAKDRRNIRAPEWPRRASCT
SSTSGSKRNSVDTATSSSLSTPSEPLSPTSSLGEERN

TRTRPLEQKLISEEDLAANDILDYKDDDDKV

Tag:	C-Myc/DDK
Predicted MW:	83.6 kDa
Concentration:	>0.05 µg/µL as determined by microplate BCA method
Purity:	> 80% as determined by SDS-PAGE and Coomassie blue staining
Buffer:	25 mM Tris-HCl, 100 mM glycine, pH 7.3, 10% glycerol
Preparation:	Recombinant protein was captured through anti-DDK affinity column followed by conventional chromatography steps.
Note:	For testing in cell culture applications, please filter before use. Note that you may experience some loss of protein during the filtration process.
Storage:	Store at -80°C.



[View online »](#)

Stability: Stable for 12 months from the date of receipt of the product under proper storage and handling conditions. Avoid repeated freeze-thaw cycles.

RefSeq: [NP_002094](#)

Locus ID: 2997

UniProt ID: [P13807](#)

RefSeq Size: 3635

Cytogenetics: 19q13.33

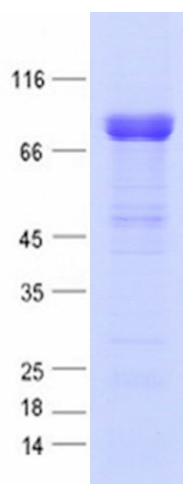
RefSeq ORF: 2211

Synonyms: GSY; GYS

Summary: The protein encoded by this gene catalyzes the addition of glucose monomers to the growing glycogen molecule through the formation of alpha-1,4-glycoside linkages. Mutations in this gene are associated with muscle glycogen storage disease. Alternatively spliced transcript variants encoding different isoforms have been found for this gene.[provided by RefSeq, Sep 2009]

Protein Pathways: Insulin signaling pathway, Starch and sucrose metabolism

Product images:



Coomassie blue staining of purified GYS1 protein (Cat# [TP300940]). The protein was produced from HEK293T cells transfected with GYS1 cDNA clone (Cat# [RC200940]) using MegaTran 2.0 (Cat# [TT210002]).