

## Product datasheet for TP300940

### Glycogen synthase 1 (GYS1) (NM\_002103) Human Recombinant Protein

#### Product data:

**Product Type:** Recombinant Proteins  
**Description:** Recombinant protein of human glycogen synthase 1 (muscle) (GYS1), 20 µg  
**Species:** Human  
**Expression Host:** HEK293T  
**Expression cDNA Clone or AA Sequence:** >RC200940 protein sequence  
Red=Cloning site Green=Tags(s)

MPLNRTLMSSSLPGLEDWEDEFDLENVAVLFEVAWEVANKVGGIYTVLQTKAKVTGDEWGDNYFLVGPYT  
 E  
 QGVRTQVELLEAPTPALKRTLDSMNSKGCKVYFGRWLIIEGGPLVLLDVGASAWALERWKGELWDT  
 CNIG  
 VPWYDREANDAVLFGFLTTFWFLGFLAQSEEKPHVVAHFHEWLAGVGLCLCRARRLPVATIFTTHATLLG  
 RYLCAGAVDFYNNLENFNVDKEAGERQIYHRYCMERAAAHCAHVFTTVSQITAIEAQHLLKRKPDIVTPN  
 GLNVKKFSAMHEFQNLHAQSKARIQEFVRGHFYGHLDLFDKTLFFIAGRYEFSNKGADVLEALARLN  
 YLLRVNGSEQTVVAFFIMPARTNNFNVETLKGQAVRKQLWDTANTVKEKFGKRLYESLLVGSPLDMNKM  
 L  
 DKEDFTMMKRAIFATQRQSFPPVCTHNMLDDSSDPILTTIRRIGLFNSSADRVKVIHFPEFLSSTSPLLP  
 VDYEYFVRGCHLGVFPSYEPWGYTPAECTVMGIPSISTNLSGFGCFMEEHIADPSAYGIYILDRRFRSL  
 DDSCSQLTSFLYFCQQSRRQRIIQNRTERLSDLLDWKYLGRYYMSARHMAKAFPEHFTYEPNEADA  
 AQGYRYPRPASVPPSPSLSRHSSPHQSEDEEDPRNGPLEEDGERYDEDEEAAKDRRNIRAPEWPRRASCT  
 SSTSGSKRNSVDTATSSSLSTPSEPLSPTSSLGEERN

TRTRPLEQKLISEEDLAANDILDYKDDDDKV

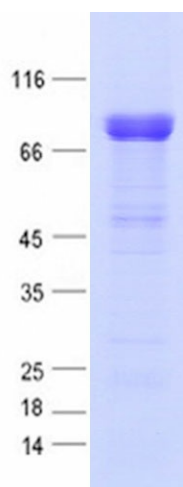
**Tag:** C-Myc/DDK  
**Predicted MW:** 83.6 kDa  
**Concentration:** >0.05 µg/µL as determined by microplate BCA method  
**Purity:** > 80% as determined by SDS-PAGE and Coomassie blue staining  
**Buffer:** 25 mM Tris-HCl, 100 mM glycine, pH 7.3, 10% glycerol  
**Preparation:** Recombinant protein was captured through anti-DDK affinity column followed by conventional chromatography steps.



[View online »](#)

<b>Note:</b>	For testing in cell culture applications, please filter before use. Note that you may experience some loss of protein during the filtration process.
<b>Storage:</b>	Store at -80°C.
<b>Stability:</b>	Stable for 12 months from the date of receipt of the product under proper storage and handling conditions. Avoid repeated freeze-thaw cycles.
<b>RefSeq:</b>	<a href="#">NP_002094</a>
<b>Locus ID:</b>	2997
<b>UniProt ID:</b>	<a href="#">P13807</a>
<b>RefSeq Size:</b>	3635
<b>Cytogenetics:</b>	19q13.33
<b>RefSeq ORF:</b>	2211
<b>Synonyms:</b>	GSY; GYS
<b>Summary:</b>	The protein encoded by this gene catalyzes the addition of glucose monomers to the growing glycogen molecule through the formation of alpha-1,4-glycoside linkages. Mutations in this gene are associated with muscle glycogen storage disease. Alternatively spliced transcript variants encoding different isoforms have been found for this gene.[provided by RefSeq, Sep 2009]
<b>Protein Pathways:</b>	Insulin signaling pathway, Starch and sucrose metabolism

### Product images:



Coomassie blue staining of purified GYS1 protein (Cat# TP300940). The protein was produced from HEK293T cells transfected with GYS1 cDNA clone (Cat# [RC200940]) using MegaTran 2.0 (Cat# [TT210002]).