

## Product datasheet for **TP300939**

### **SDF2 (NM\_006923) Human Recombinant Protein**

#### Product data:

Product Type: Recombinant Proteins

Description: Recombinant protein of human stromal cell-derived factor 2 (SDF2), 20 µg

Species: Human

Expression Host: HEK293T

Expression cDNA Clone  
or AA Sequence: >RC200939 protein sequence  
**Red**=Cloning site **Green**=Tags(s)

MAVPLLLLGLWSAVGASSLGWTCGSVVKLLNTRHNVRLHSHDVRVYSGSGGQQSVTGVTSVDDSNYSW  
RIRGKSATVCERGTPIKCGQPIRLTHVNTGRNLHSHHFTSPLSGNQEVSAFGEEGEGDYLDLDDWTVLCNGP  
YWVRDGEVRFKHSSTEVLLSVTGEQYGRPISGQKEVHGMAQPSQNNYWKAMEGIFMKPSELLKAEAHAE  
L

**TRTRPLEQKLISEEDLAANDILDYKDDDDKV**

Tag: C-Myc/DDK

Predicted MW: 21.2 kDa

Concentration: >0.05 µg/µL as determined by microplate BCA method

Purity: > 80% as determined by SDS-PAGE and Coomassie blue staining

Buffer: 25 mM Tris-HCl, 100 mM glycine, pH 7.3, 10% glycerol

Preparation: Recombinant protein was captured through anti-DDK affinity column followed by conventional chromatography steps.

Note: For testing in cell culture applications, please filter before use. Note that you may experience some loss of protein during the filtration process.

Storage: Store at -80°C.

Stability: Stable for 12 months from the date of receipt of the product under proper storage and handling conditions. Avoid repeated freeze-thaw cycles.

RefSeq: [NP\\_008854](#)

Locus ID: 6388

UniProt ID: [Q99470](#), [Q6IBU4](#)



[View online »](#)

RefSeq Size: 1565

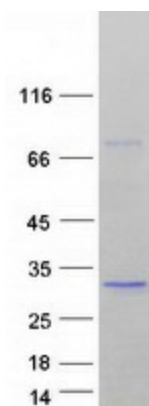
Cytogenetics: 17q11.2

RefSeq ORF: 633

**Summary:** The protein encoded by this gene is believed to be a secretory protein. It has regions of similarity to hydrophilic segments of yeast mannosyltransferases. Its expression is ubiquitous and the gene appears to be relatively conserved among mammals. Alternate splicing results in both coding and non-coding variants. A pseudogene of this gene is located on chromosome 15. [provided by RefSeq, Dec 2011]

**Protein Families:** Secreted Protein

### Product images:



Coomassie blue staining of purified SDF2 protein (Cat# TP300939). The protein was produced from HEK293T cells transfected with SDF2 cDNA clone (Cat# [RC200939]) using MegaTran 2.0 (Cat# [TT210002]).