

## Product datasheet for **TP300930**

### ASMTL (NM\_004192) Human Recombinant Protein

#### Product data:

Product Type:	Recombinant Proteins
Description:	Recombinant protein of human acetylserotonin O-methyltransferase-like (ASMTL), 20 µg
Species:	Human
Expression Host:	HEK293T
Expression cDNA Clone or AA Sequence:	>RC200930 protein sequence <b>Red</b> =Cloning site <b>Green</b> =Tags(s)

MVLCPVIGKLLHKRWLASASPRRQEILSNAGLRFVWPSKFKELDKASFATPYGYAMETAKQKALEVA  
NRLYQKDLRAPDVGADTIVTVGGILILEKPVDKQDAYRMLSRLSGREHSVFTGVAIVHCSSKDHQLDTR  
VSEFYEETKVKFSELSELLWEYVHSGEPMDKAGGYGIQALGGMLVESVHGDFLNWVGFPLNHFCKQLVK  
LYPPRPEDLRRSVKHDSIPAADTFEDLSDVEGGGSEPTQRDAGSRDEKAEAGEAGQATAEAECHRTRET  
LPPFPTRLLELIEGFMLS KGLLTACKLKVFDLLKDEAPQKAADIASKVDASACGMERLLDICAAMG LLEK  
TEQGYSENTETANVYLASDGEYSLHGFIMHNNDLTWNLFYLEFAIREGTNQHHRALGKKAEDLFQDAYYQ  
SPETRLRFMRAMHG MTKLTACQVATAFNLSRFSSACDVGGCTGALARELAREYPRMQVTVFDLPDIIELA  
AHFQPPGPQAVQIHFAAGDFFRDPLPSAELYVLCRILHDWPDDKVHKLLSKVAESCKPGAGLLLVETLLD  
EEKRVAQRALMQSLNMLVQTEGKERSLGEYQC LLELHGFHQVQV VHLGGVLDAILATKVAP

**TRTRPLEQKLISEEDLAANDILDYKDDDDKV**

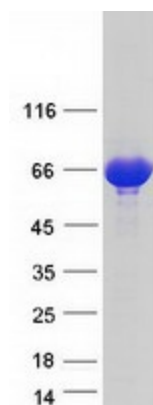
Tag:	C-Myc/DDK
Predicted MW:	68.7 kDa
Concentration:	>0.05 µg/µL as determined by microplate BCA method
Purity:	> 80% as determined by SDS-PAGE and Coomassie blue staining
Buffer:	25 mM Tris-HCl, 100 mM glycine, pH 7.3, 10% glycerol
Preparation:	Recombinant protein was captured through anti-DDK affinity column followed by conventional chromatography steps.
Note:	For testing in cell culture applications, please filter before use. Note that you may experience some loss of protein during the filtration process.
Storage:	Store at -80°C.



[View online »](#)

Stability:	Stable for 12 months from the date of receipt of the product under proper storage and handling conditions. Avoid repeated freeze-thaw cycles.
RefSeq:	<a href="#">NP_004183</a>
Locus ID:	8623
UniProt ID:	<a href="#">O95671</a>
RefSeq Size:	2149
Cytogenetics:	X;Y
RefSeq ORF:	1863
Synonyms:	ASMTLX; ASMTLY; ASTML
Summary:	The protein encoded by this gene has an N-terminus that is similar to the multicopy associated filamentation (maf) protein of <i>Bacillus subtilis</i> and to orfE of <i>Escherichia coli</i> , while the C-terminus is similar to N-acetylserotonin O-methyltransferase. This gene is located in the pseudoautosomal region 1 (PAR1) of X and Y chromosomes. Three transcript variants encoding different isoforms have been found for this gene. [provided by RefSeq, Mar 2010]

### Product images:



Coomassie blue staining of purified ASMTL protein (Cat# TP300930). The protein was produced from HEK293T cells transfected with ASMTL cDNA clone (Cat# [RC200930]) using MegaTran 2.0 (Cat# [TT210002]).