

Product datasheet for **TP300926**

MAT2A (NM_005911) Human Recombinant Protein

Product data:

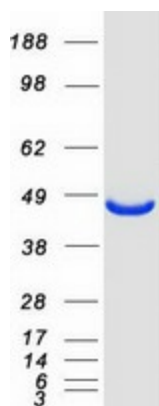
Product Type:	Recombinant Proteins
Description:	Recombinant protein of human methionine adenosyltransferase II, alpha (MAT2A), 20 µg
Species:	Human
Expression Host:	HEK293T
Expression cDNA Clone or AA Sequence:	>RC200926 protein sequence Red =Cloning site Green =Tags(s)
	<p>MNGQLNGFHEAFIEEGTFLFTSESVGEGHPDKICDQISDAVLDAHLQQDPDAKVACETVAKTGMILLAGE ITSRAAVDYQKVVREAVKHIGYDDSSKGFYKTCNVLVALEQQSPDIAQGVHLDRNEEDIGAGDQGLMFG YATDETEECMPLTIVLAHKLNAKLAELRRNGTLPWLRPDSKTQVTVQYMQDRGAVLPIRVHTIVISVQHD EEVCLDEMARDALKEKVIKAVVPAKYLDEDTIYHLQPSGRFVIGGPQGDAGLTGRKIIVDTYGGWGAHGGG AFSGKDYTKVDRSAAYAARWVAKSLVKGGCLCRRVLVQVSYAIGVSHPLSISIFHYGTSQKSERELLEIVK KNFDLRPGVIVRDLDLKKPIYQRTAAYGHFGRDSFPWEVPKCLKY</p> <p>TRTRPLEQKLISEEDLAANDILDYKDDDDKV</p>
Tag:	C-Myc/DDK
Predicted MW:	43.5 kDa
Concentration:	>0.05 µg/µL as determined by microplate BCA method
Purity:	> 80% as determined by SDS-PAGE and Coomassie blue staining
Buffer:	25 mM Tris-HCl, 100 mM glycine, pH 7.3, 10% glycerol
Preparation:	Recombinant protein was captured through anti-DDK affinity column followed by conventional chromatography steps.
Note:	For testing in cell culture applications, please filter before use. Note that you may experience some loss of protein during the filtration process.
Storage:	Store at -80°C.
Stability:	Stable for 12 months from the date of receipt of the product under proper storage and handling conditions. Avoid repeated freeze-thaw cycles.
RefSeq:	NP_005902
Locus ID:	4144



[View online »](#)

UniProt ID:	P31153 , A0A140VJP5
RefSeq Size:	3022
Cytogenetics:	2p11.2
RefSeq ORF:	1185
Synonyms:	MATA2; MATII; SAMS2
Summary:	The protein encoded by this gene catalyzes the production of S-adenosylmethionine (AdoMet) from methionine and ATP. AdoMet is the key methyl donor in cellular processes. [provided by RefSeq, Jun 2011]
Protein Pathways:	Cysteine and methionine metabolism, Metabolic pathways, Selenoamino acid metabolism

Product images:



Coomassie blue staining of purified MAT2A protein (Cat# TP300926). The protein was produced from HEK293T cells transfected with MAT2A cDNA clone (Cat# [RC200926]) using MegaTran 2.0 (Cat# [TT210002]).