

Product datasheet for **TP300923SE**

OLFML3 (NM_020190) Human Recombinant Protein

Product data:

Product Type:	Recombinant Proteins
Description:	Purified recombinant protein of Human olfactomedin-like 3 (OLFML3), secretory expressed in HEK293T cells, 20ug
Species:	Human
Expression Host:	HEK293T
Expression cDNA Clone or AA Sequence:	>RC200923 protein sequence Red =Cloning site Green =Tags(s)

MGPSTPLLILFLLSWGPLQGQQHHLVEYMERRLAALAEERLAQCQDQSSRHAAELRDFKNKMLPILLEVAE
KEREALRTEADTISGRVDRLEREVDYLETQNPALPCVEFDEKVTGGPGTKGKGRRNEKYDMVTDCGYTIS
QVRSMKILKRFGGPAGLWTKDPLGQTEKIYVLDGTQNDTAFVFPRLRDFTLAMAARKASRVRVFPWPVWGT
GQLVYGGFLYFARRPPGRPGGGEMENTLQLIKFHLANRTVVDSSVFPAGEGLIPPYGLTADTYIDLADE
EGLWAVYATREDDRHLCCLAKLDPQTLDEQQWDTPCPRENAEAAFVICGLTYVVYNTRPASRARIQCSFD
ASGTLTPERAALPYFPRRYGAHASLRYNPRERQLYAWDDGYQIVYKLEMRRKKEEEV

TRTRPLEQKLISEEDLAANDILDYKDDDDKV

Tag:	C-Myc/DDK
Predicted MW:	47.4 kDa
Concentration:	>50 ug/mL as determined by microplate Bradford method
Purity:	> 80% as determined by SDS-PAGE and Coomassie blue staining
Buffer:	25mM Tris-HCl, pH7.3, 100mM glycine, 10% glycerol
Note:	For culture applications, please filter before use. Note that you may experience some loss of protein during the filtration process.
Storage:	Store at -80°C after receiving vials.
Stability:	Stable for at least 1 year from receipt of products under proper storage and handling conditions. Avoid repeated freeze-thaw cycles.
RefSeq:	NP_064575
Locus ID:	56944
UniProt ID:	Q9NRN5 , M1LAK4



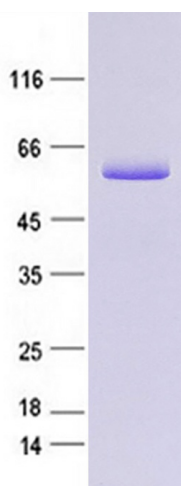
[View online »](#)

RefSeq Size: 1854
Cytogenetics: 1p13.2
RefSeq ORF: 1218
Synonyms: HNOEL-iso; OLF44

Summary: This gene encodes a member of the olfactomedin-like gene family which also includes genes encoding noelin, tiarin, myocilin, amassin, optimedin, photomedin, and latrophilin. The encoded protein is a secreted extracellular matrix glycoprotein with a C-terminal olfactomedin domain that facilitates protein-protein interactions, cell adhesion, and intercellular interactions. It serves as both a scaffold protein that recruits bone morphogenetic protein 1 to its substrate chordin, and as a vascular tissue remodeler with pro-angiogenic properties. Alternative splicing results in multiple transcript variants. [provided by RefSeq, Feb 2017]

Protein Families: Secreted Protein

Product images:



Coomassie blue staining of purified OLFML3 protein (Cat #TP300923SE). The protein was produced from mammalian cells transfected with OLFML3 cDNA clone (Cat #[RC200923]).