

Product datasheet for **TP300923L**

OLFML3 (NM_020190) Human Recombinant Protein

Product data:

Product Type:	Recombinant Proteins
Description:	Recombinant protein of human olfactomedin-like 3 (OLFML3), 1 mg
Species:	Human
Expression Host:	HEK293T
Expression cDNA Clone or AA Sequence:	>RC200923 protein sequence Red =Cloning site Green =Tags(s)

MGPSTPLLILFLLSWGPLQGQHHLVEYMERRLAALAEERLAQCQDQSSRHAAELRDFKNKMLPILLEVAE
KEREALRTEADTISGRVDRLEREVDYLETQNPALPCVEFDEKVTGGPGTKGKGRRNEKYDMVTDCGYTIS
QVRSMKILKRFGGPAGLWTKDPLGQTEKIYVLDGTQNDTAFVFPRLRDFTLAMAARKASRVRVPPFPWVGT
GQLVYGGFLYFARRPPGRPGGGGEMENTLQLIKFHLANRTVVDSSVFAEGLIPPYGLTADTYIDLADE
EGLWAVYATREDDRHLCCLAKLDPQTLDTTEQQWDTPCPRENAEAAFVICGTLVWYNTRPASRARIQCSFD
ASGTLTPERAALPYFPRRYGAHASLRYNPRERQLYAWDDGYQIVYKLEMRRKKEEEV

TRTRPLEQKLISEEDLAANDILDYKDDDDKV

Tag:	C-Myc/DDK
Predicted MW:	45.8 kDa
Concentration:	>0.05 µg/µL as determined by microplate BCA method
Purity:	> 80% as determined by SDS-PAGE and Coomassie blue staining
Buffer:	25 mM Tris-HCl, 100 mM glycine, pH 7.3, 10% glycerol
Preparation:	Recombinant protein was captured through anti-DDK affinity column followed by conventional chromatography steps.
Note:	For testing in cell culture applications, please filter before use. Note that you may experience some loss of protein during the filtration process.
Storage:	Store at -80°C.
Stability:	Stable for 12 months from the date of receipt of the product under proper storage and handling conditions. Avoid repeated freeze-thaw cycles.
RefSeq:	NP_064575
Locus ID:	56944



[View online »](#)

UniProt ID: [Q9NRN5](#), [M1LAK4](#)

RefSeq Size: 1854

Cytogenetics: 1p13.2

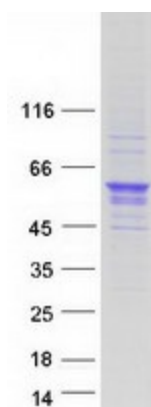
RefSeq ORF: 1218

Synonyms: HNOEL-iso; OLF44

Summary: This gene encodes a member of the olfactomedin-like gene family which also includes genes encoding noelin, tiarin, myocilin, amassin, optimedin, photomedin, and latrophilin. The encoded protein is a secreted extracellular matrix glycoprotein with a C-terminal olfactomedin domain that facilitates protein-protein interactions, cell adhesion, and intercellular interactions. It serves as both a scaffold protein that recruits bone morphogenetic protein 1 to its substrate chordin, and as a vascular tissue remodeler with pro-angiogenic properties. Alternative splicing results in multiple transcript variants. [provided by RefSeq, Feb 2017]

Protein Families: Secreted Protein

Product images:



Coomassie blue staining of purified OLFML3 protein (Cat# [TP300923]). The protein was produced from HEK293T cells transfected with OLFML3 cDNA clone (Cat# [RC200923]) using MegaTran 2.0 (Cat# [TT210002]).