

Product datasheet for TP300921L

CBARA1 (MICU1) (NM_006077) Human Recombinant Protein

Product data:

Product Type:	Recombinant Proteins
Description:	Purified recombinant protein of Homo sapiens calcium binding atopy-related autoantigen 1 (CBARA1), 1 mg
Species:	Human
Expression Host:	HEK293T
Expression cDNA Clone or AA Sequence:	>RC200921 protein sequence Red=Cloning site Green=Tags(s)

MFRLNSLSALAE LAVGSRWYHGGSQPIQIRRRLLMMVAFLGASAVTASTGLLWKRAHAESPPCVDNLKSDI
GDKGKNKDEGDVCNHEKKTADLAPHPEEKKKRSGFRDRKVM EYENRIRAYSTPKIFRYFATLKVISEP
GEAEVFMTPEDFVRSITPNEKQPEHLGLDQYIIRKFDGKKISQEREKFADEGSIFYTLGECGLISFSDYI
FLTTLVSTPQRNFEIAFKMFDLNGDGEVDMEEFEQVQSIIRSQTSMGMRHRDRPTTGNTLKSGLCSALTT
YFFGADLKGKLTIKNFLEFQRKLQHDVLEKLEFERHDPVDGRITERQFGGMLLAYSGVQSKKLTAMQRQLK
KHFKEGKGLTFQEVENFFTLKNINDVDTALSFYHMAGASLDKVTMQQVARTVAKVELSDHVCDVWFALF
DCDNGELSNKEFVSIMKQRLMRGLEKPKDMGFTRLMQAMWKCAQETA WDFALPKQ

TRTRPLEQKLISEEDLAANDILDYKDDDDKV

Tag:	C-Myc/DDK
Predicted MW:	54.4 kDa
Concentration:	>0.05 µg/µL as determined by microplate BCA method
Purity:	> 80% as determined by SDS-PAGE and Coomassie blue staining
Buffer:	25 mM Tris-HCl, 100 mM glycine, pH 7.3, 10% glycerol
Preparation:	Recombinant protein was captured through anti-DDK affinity column followed by conventional chromatography steps.
Note:	For testing in cell culture applications, please filter before use. Note that you may experience some loss of protein during the filtration process.
Storage:	Store at -80°C.
Stability:	Stable for 12 months from the date of receipt of the product under proper storage and handling conditions. Avoid repeated freeze-thaw cycles.



[View online »](#)

RefSeq: [NP_006068](#)

Locus ID: 10367

UniProt ID: [Q9BPX6](#)

RefSeq Size: 2506

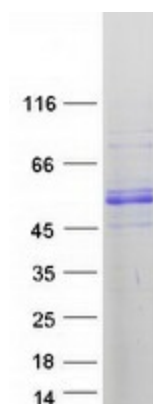
Cytogenetics: 10q22.1

RefSeq ORF: 1428

Synonyms: ara CALC; CALC; CBARA1; EFHA3; MPXPS

Summary: This gene encodes an essential regulator of mitochondrial Ca²⁺ uptake under basal conditions. The encoded protein interacts with the mitochondrial calcium uniporter, a mitochondrial inner membrane Ca²⁺ channel, and is essential in preventing mitochondrial Ca²⁺ overload, which can cause excessive production of reactive oxygen species and cell stress. Alternatively spliced transcript variants encoding different isoforms have been described. [provided by RefSeq, Mar 2013]

Product images:



Coomassie blue staining of purified MICU1 protein (Cat# [TP300921]). The protein was produced from HEK293T cells transfected with MICU1 cDNA clone (Cat# [RC200921]) using MegaTran 2.0 (Cat# [TT210002]).