

## Product datasheet for TP300920L

### LRSAM1 (NM\_001005373) Human Recombinant Protein

#### Product data:

Product Type:	Recombinant Proteins
Description:	Recombinant protein of human leucine rich repeat and sterile alpha motif containing 1 (LRSAM1), transcript variant 2, 1 mg
Species:	Human
Expression Host:	HEK293T
Expression cDNA Clone or AA Sequence:	>RC200920 protein sequence <b>Red</b> =Cloning site <b>Green</b> =Tags(s)

MPLFFRKRKPSEEARARKRLEYQMCLAKEAGADDILDISKCELSEIPFGAFATCKVLQKKVLIVHTNHLTSL  
LPKSCSLSLATIKVLDLHDNQLTALPDDLGLTALQVLNVERNQLMQLPRSIGNLTQLQTLNVKDNKLL  
ELPDTVGELRSLRTLNIISGNEIQRLPQMLAHVRTLEMLSLDASAMVYPPREVCGAGTAAILQFLCKESGL  
EYPPSQYLLPILEQDGIENSRDSPDGPTDRFSREELEWQNRFSYDYEKRKEQKMLEKLEFERRLELGQRE  
HTQLLQSSSQKDEILQTVKEEQSRLEQGLSEHQRHLD AERQLQEQLKQTEQNISSRIQKLLQDNQRQK  
KSSEILKSLENERIRMEQLMSITQEETESLRRRDVASAMQQMLTESCKNRLIQMAYESQRQNLVQQACSS  
MAEMDERFQQILSWQQMDQNKAISQILQESAMQKAFAEALQVKKDLMHRQIRSIKLIETELLQTLQLEL  
KRKSLDTESLQEMISEQRWALSLLQQLLKEKQQRREEELREILTELEAKSETRQENYWLIQYQRLLNQKP  
LSLKLQEEGMRQLVALLEELSAEHYLPFAHHRSLDLSQMSPGDLAKVGVSEAGLQHEILRRVQELL  
DAARIQPELKPPMGEVVTPTAPQEPPEVSRPSAPPAELEVQASECVCLEREAQMIFLNCGHVCCQCC  
QPLRTCPLCRQDIAQRLRIYHSS

**TRTRPLEQKLISEEDLAANDILDYKDDDDKV**

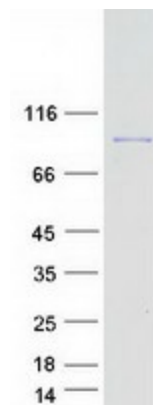
Tag:	C-Myc/DDK
Predicted MW:	83.4 kDa
Concentration:	>0.05 µg/µL as determined by microplate BCA method
Purity:	> 80% as determined by SDS-PAGE and Coomassie blue staining
Buffer:	25 mM Tris-HCl, 100 mM glycine, pH 7.3, 10% glycerol
Preparation:	Recombinant protein was captured through anti-DDK affinity column followed by conventional chromatography steps.
Note:	For testing in cell culture applications, please filter before use. Note that you may experience some loss of protein during the filtration process.



[View online >](#)

<b>Storage:</b>	Store at -80°C.
<b>Stability:</b>	Stable for 12 months from the date of receipt of the product under proper storage and handling conditions. Avoid repeated freeze-thaw cycles.
<b>RefSeq:</b>	<a href="#">NP_001005373</a>
<b>Locus ID:</b>	90678
<b>UniProt ID:</b>	<a href="#">Q6UWE0</a> , <a href="#">A0A024R870</a>
<b>RefSeq Size:</b>	3146
<b>Cytogenetics:</b>	9q33.3-q34.11
<b>RefSeq ORF:</b>	2169
<b>Synonyms:</b>	CMT2P; RIFLE; TAL
<b>Summary:</b>	This gene encodes a ring finger protein involved in a variety of functions, including regulation of signaling pathways and cell adhesion, mediation of self-ubiquitylation, and involvement in cargo sorting during receptor endocytosis. Mutations in this gene have been associated with Charcot-Marie-Tooth disease. Multiple transcript variants encoding different isoforms have been identified for this gene. [provided by RefSeq, Jan 2012]
<b>Protein Families:</b>	Druggable Genome

### Product images:



Coomassie blue staining of purified LRSAM1 protein (Cat# [TP300920]). The protein was produced from HEK293T cells transfected with LRSAM1 cDNA clone (Cat# [RC200920]) using MegaTran 2.0 (Cat# [TT210002]).