

Product datasheet for TP300915

ABHD6 (NM_020676) Human Recombinant Protein

Product data:

Product Type:	Recombinant Proteins
Description:	Recombinant protein of human abhydrolase domain containing 6 (ABHD6), 20 µg
Species:	Human
Expression Host:	HEK293T
Expression cDNA Clone or AA Sequence:	>RC200915 protein sequence Red =Cloning site Green =Tags(s)
	<p>MDLDVNMFVIAGGTLAIPILAFVASFLLWPSALIRIYYWYWRRTLGMQVRYVHHEDYQFCYSFRGRPGH KPSILMLHGFSAHKDMWLSVVKFLPKNLHLVCVDMPGHEGTTSSLDDLSIDGQVKRIHQFVECLKLNKK PFHLVGTSMGGQVAGVYAAAYPSDVSSLCLVCPAGLQYSTDNQFVQRLKELQGSAAVEKIPLIPSTPEEM SEMLQLCSYVRFKVPQQILQGLVDVRIPHNNFYRKLFLFLEIVSEKSRYSLHQNMKIKVPTQIIWGKQDQV LDVSGADMLAKSIANCQVELLENCGHSVVMERPRKTAKLIIDFLASVHNTDNNKKLD</p> <p>TRTRPLEQKLISEEDLAANDILDYKDDDDKV</p>
Tag:	C-Myc/DDK
Predicted MW:	38.2 kDa
Concentration:	>0.05 µg/µL as determined by microplate BCA method
Purity:	> 80% as determined by SDS-PAGE and Coomassie blue staining
Buffer:	25 mM Tris-HCl, 100 mM glycine, pH 7.3, 10% glycerol
Preparation:	Recombinant protein was captured through anti-DDK affinity column followed by conventional chromatography steps.
Note:	For testing in cell culture applications, please filter before use. Note that you may experience some loss of protein during the filtration process.
Storage:	Store at -80°C.
Stability:	Stable for 12 months from the date of receipt of the product under proper storage and handling conditions. Avoid repeated freeze-thaw cycles.
RefSeq:	<u>NP_065727</u>
Locus ID:	57406



[View online »](#)

UniProt ID: [Q9BV23](#), [A0A024R323](#)

RefSeq Size: 2413

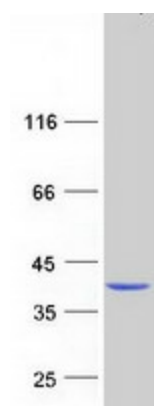
Cytogenetics: 3p14.3

RefSeq ORF: 1011

Summary: Lipase that preferentially hydrolysis medium-chain saturated monoacylglycerols including 2-arachidonoylglycerol (PubMed:22969151). Through 2-arachidonoylglycerol degradation may regulate endocannabinoid signaling pathways (By similarity). Also has a lysophosphatidyl lipase activity with a preference for lysophosphatidylglycerol among other lysophospholipids (By similarity). Also able to degrade bis(monoacylglycero)phosphate (BMP) and constitutes the major enzyme for BMP catabolism (PubMed:26491015). BMP, also known as lysobisphosphatidic acid, is enriched in late endosomes and lysosomes and plays a key role in the formation of intraluminal vesicles and in lipid sorting (PubMed:26491015). [UniProtKB/Swiss-Prot Function]

Protein Families: Transmembrane

Product images:



Coomassie blue staining of purified ABHD6 protein (Cat# TP300915). The protein was produced from HEK293T cells transfected with ABHD6 cDNA clone (Cat# [RC200915]) using MegaTran 2.0 (Cat# [TT210002]).