

## Product datasheet for **TP300912M**

### CHAC1 (NM\_024111) Human Recombinant Protein

#### Product data:

**Product Type:** Recombinant Proteins

**Description:** Recombinant protein of human ChaC, cation transport regulator homolog 1 (E. coli) (CHAC1), transcript variant 1, 100 µg

**Species:** Human

**Expression Host:** HEK293T

**Expression cDNA Clone or AA Sequence:** >RC200912 protein sequence  
**Red**=Cloning site **Green**=Tags(s)

MKQESAAPNTPPTSQSPTPSAQFPRNDGDPQALWIFGYGSLVWRPDFAYSDSRVGFVRGYSRRFWQGDTF  
HRGSDKMPGRVVTLLLEDHEGCTWGVAYVQVQGEQVSKALKYLNREAVLGGYDTKEVTFYPQDAPDQPLKA  
LAYVATPQNPGYLGPAPEEAIATQILACRFGSGHNLEYLLRLADFMQLCGPQAQDEHLAAIVDAVGTMLP  
CFCPTEQALALV

**TRTRPLEQKLISEEDLAANDILDYKDDDDKV**

**Tag:** C-Myc/DDK

**Predicted MW:** 24.2 kDa

**Concentration:** >0.05 µg/µL as determined by microplate BCA method

**Purity:** > 80% as determined by SDS-PAGE and Coomassie blue staining

**Buffer:** 25 mM Tris-HCl, 100 mM glycine, pH 7.3, 10% glycerol

**Preparation:** Recombinant protein was captured through anti-DDK affinity column followed by conventional chromatography steps.

**Note:** For testing in cell culture applications, please filter before use. Note that you may experience some loss of protein during the filtration process.

**Storage:** Store at -80°C.

**Stability:** Stable for 12 months from the date of receipt of the product under proper storage and handling conditions. Avoid repeated freeze-thaw cycles.

**RefSeq:** [NP\\_077016](#)

**Locus ID:** 79094



[View online »](#)

UniProt ID: [Q9BUX1](#)

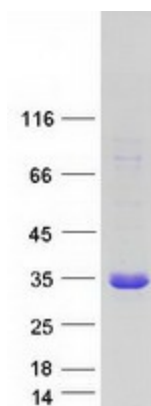
RefSeq Size: 1578

Cytogenetics: 15q15.1

RefSeq ORF: 666

**Summary:** This gene encodes a member of the gamma-glutamylcyclotransferase family of proteins. The encoded protein has been shown to promote neuronal differentiation by deglycosylation of the Notch receptor, which prevents receptor maturation and inhibits Notch signaling. This protein may also play a role in the unfolded protein response, and in regulation of glutathione levels and oxidative balance in the cell. Elevated expression of this gene may indicate increased risk of cancer recurrence among breast and ovarian cancer patients. [provided by RefSeq, Sep 2016]

### Product images:



Coomassie blue staining of purified CHAC1 protein (Cat# [TP300912]). The protein was produced from HEK293T cells transfected with CHAC1 cDNA clone (Cat# [RC200912]) using MegaTran 2.0 (Cat# [TT210002]).