

## Product datasheet for **TP300911M**

### CDC20 (NM\_001255) Human Recombinant Protein

#### Product data:

Product Type:	Recombinant Proteins
Description:	Recombinant protein of human cell division cycle 20 homolog ( <i>S. cerevisiae</i> ) (CDC20), 100 µg
Species:	Human
Expression Host:	HEK293T
Expression cDNA Clone or AA Sequence:	>RC200911 protein sequence <b>Red</b> =Cloning site <b>Green</b> =Tags(s)
	<p>MAQFAFESDLHSLQLDAPIPNAPPARWQRKAKEAAGPAPSPMRAANRSHSAGRTPGRTPGKSSSKVQTT PSKPGGDRYIPHRSAQMEVASFLLSKENQPENSQTPTKKEHQKAWALNLNGFDVEEAKILRLSGKPQNA PEGYQNRLLKVLVSQKATPGSSRKTCRYIPSLPDRILDAPEIRNDYYLNLVDWSSGNVLAVALDNSVYLWS ASSGDILQLLQMEQPGEYISSVAWIKEGNYLAVGTSSAEVQLWDVQQKRLRNMTSHSARVGSLSWNSYI LSSGSRSGHIIHHHDVRAEHHVATLSGHSQEVCGLRWAPDGRHLASGGNDNLVNVWPSAPGEGGWVPLQT FTQHQGAVKAWAWCPWQSNVLATGGGTSDRHIRIWNVCSGACLSAVDAHSQVCSILWSPHYKELISGHGF AQNQLVIWKYPTMAKVAELKGHTSRVLSLTMSPDGATVASAAADETLRLWRCFELDPARRREREKASAAK SSLIHQGIR</p> <p><b>TRTRPLEQKLISEEDLAANDILDYKDDDDKV</b></p>
Tag:	C-Myc/DDK
Predicted MW:	54.5 kDa
Concentration:	>0.05 µg/µL as determined by microplate BCA method
Purity:	> 80% as determined by SDS-PAGE and Coomassie blue staining
Buffer:	25 mM Tris-HCl, 100 mM glycine, pH 7.3, 10% glycerol
Preparation:	Recombinant protein was captured through anti-DDK affinity column followed by conventional chromatography steps.
Note:	For testing in cell culture applications, please filter before use. Note that you may experience some loss of protein during the filtration process.
Storage:	Store at -80°C.
Stability:	Stable for 12 months from the date of receipt of the product under proper storage and handling conditions. Avoid repeated freeze-thaw cycles.



[View online »](#)

RefSeq: [NP\\_001246](#)

Locus ID: 991

UniProt ID: [Q12834](#)

RefSeq Size: 1697

Cytogenetics: 1p34.2

RefSeq ORF: 1497

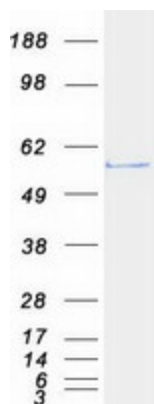
Synonyms: bA276H19.3; CDC20A; p55CDC

**Summary:** CDC20 appears to act as a regulatory protein interacting with several other proteins at multiple points in the cell cycle. It is required for two microtubule-dependent processes, nuclear movement prior to anaphase and chromosome separation. [provided by RefSeq, Jul 2008]

**Protein Families:** Druggable Genome

**Protein Pathways:** Cell cycle, Oocyte meiosis, Ubiquitin mediated proteolysis

### Product images:



Coomassie blue staining of purified CDC20 protein (Cat# [TP300911]). The protein was produced from HEK293T cells transfected with CDC20 cDNA clone (Cat# [RC200911]) using MegaTran 2.0 (Cat# [TT210002]).