

## Product datasheet for **TP300905**

### **NPRL3 (NM\_001039476) Human Recombinant Protein**

#### Product data:

Product Type:	Recombinant Proteins
Description:	Recombinant protein of human chromosome 16 open reading frame 35 (C16orf35), transcript variant 2, 20 µg
Species:	Human
Expression Host:	HEK293T
Expression cDNA Clone or AA Sequence:	>RC200905 protein sequence <b>Red</b> =Cloning site <b>Green</b> =Tags(s)

MADGNEGQPSPFHILPKCKLARDLKEAYDSLCTSGVRLHINSWLEVSFCLPHKIHYAASSLIPPEAIE  
RSLKAIRPYHALLLSDEKSLGELPIDCSPALVRVIKTTSAVKNLQQLAQDADLALLQVFQLAAHLVYW  
GKAIIIYPLCENNVYMLSPNASVCLYSPLAEQFSHQFPHDLPSVLAKFSLPVSLSEFRNPLAPAVQETQ  
LIQMWWMLQRRLLIQLHTYVCLMASPSEEEPRPREDDVPFTARVGGRLSTPNALSFGSPTSSDDMTLT  
SPSMDNSSAELLPSGDSPLNQRMTENLLASLSEHERAAILSVPAQAQNPEDLRMFARLLHYFRGRHHLEEI  
MYNENTRRSOLLMLFDKFRSVLVVTTTHEDPVIQVQALLP

**TRTRPLEQKLISEEDLAANDILDYKDDDDKV**

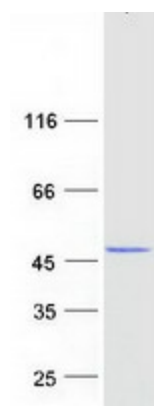
Tag:	C-Myc/DDK
Predicted MW:	43.4 kDa
Concentration:	>0.05 µg/µL as determined by microplate BCA method
Purity:	> 80% as determined by SDS-PAGE and Coomassie blue staining
Buffer:	25 mM Tris-HCl, 100 mM glycine, pH 7.3, 10% glycerol
Preparation:	Recombinant protein was captured through anti-DDK affinity column followed by conventional chromatography steps.
Note:	For testing in cell culture applications, please filter before use. Note that you may experience some loss of protein during the filtration process.
Storage:	Store at -80°C.
Stability:	Stable for 12 months from the date of receipt of the product under proper storage and handling conditions. Avoid repeated freeze-thaw cycles.
RefSeq:	<a href="#">NP_001034565</a>



[View online »](#)

Locus ID:	8131
UniProt ID:	<a href="#">Q9BTE2</a>
RefSeq Size:	2840
Cytogenetics:	16p13.3
RefSeq ORF:	1170
Synonyms:	C16orf35; CGTHBA; FFEVF3; HS-40; MARE; NPR3; RMD11
Summary:	The function of the encoded protein is not known. [provided by RefSeq, Aug 2011]

### Product images:



Coomassie blue staining of purified NPRL3 protein (Cat# TP300905). The protein was produced from HEK293T cells transfected with NPRL3 cDNA clone (Cat# [RC200905]) using MegaTran 2.0 (Cat# [TT210002]).