

## Product datasheet for TP300900M

### SSU72 (NM\_014188) Human Recombinant Protein

#### Product data:

Product Type:	Recombinant Proteins
Description:	Recombinant protein of human SSU72 RNA polymerase II CTD phosphatase homolog ( <i>S. cerevisiae</i> ) (SSU72), 100 µg
Species:	Human
Expression Host:	HEK293T
Expression cDNA Clone or AA Sequence:	>RC200900 protein sequence Red=Cloning site Green=Tags(s)

MPSSPLRVAVVCSSNQNRSMEAHNILSKRGFSVRSFGTGTHVKLPGPAPDKPNVYDFKTTYDQMYNDLLR  
KDKELYTQNGILHMLDRNKRIKPRPERFQNCCKDLFDLILTCEERVYDQVVEDLNSREQETCQPVHVVND  
IQDNHEEATLGAFLICELCQCQIHTEDMENEIDELLQEFEEKSGRTFLHTVCFY

TRTRPLEQKLISEEDLAANDILDYKDDDDKV

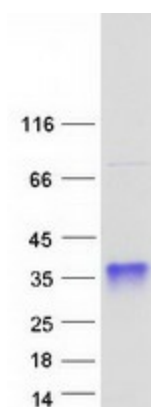
Tag:	C-Myc/DDK
Predicted MW:	22.4 kDa
Concentration:	>0.05 µg/µL as determined by microplate BCA method
Purity:	> 80% as determined by SDS-PAGE and Coomassie blue staining
Buffer:	25 mM Tris-HCl, 100 mM glycine, pH 7.3, 10% glycerol
Preparation:	Recombinant protein was captured through anti-DDK affinity column followed by conventional chromatography steps.
Note:	For testing in cell culture applications, please filter before use. Note that you may experience some loss of protein during the filtration process.
Storage:	Store at -80°C.
Stability:	Stable for 12 months from the date of receipt of the product under proper storage and handling conditions. Avoid repeated freeze-thaw cycles.
RefSeq:	<u><a href="#">NP_054907</a></u>
Locus ID:	29101
UniProt ID:	<u><a href="#">Q9NP77</a></u>



[View online »](#)

RefSeq Size:	1319
Cytogenetics:	1p36.33
RefSeq ORF:	582
Synonyms:	HSPC182; PNAS-120
Summary:	Protein phosphatase that catalyzes the dephosphorylation of the C-terminal domain of RNA polymerase II. Plays a role in RNA processing and termination. Plays a role in pre-mRNA polyadenylation via its interaction with SYMPK.[UniProtKB/Swiss-Prot Function]
Protein Families:	Druggable Genome

### Product images:



Coomassie blue staining of purified SSU72 protein (Cat# [TP300900]). The protein was produced from HEK293T cells transfected with SSU72 cDNA clone (Cat# [RC200900]) using MegaTran 2.0 (Cat# [TT210002]).