

## Product datasheet for **TP300900L**

### SSU72 (NM\_014188) Human Recombinant Protein

#### Product data:

**Product Type:** Recombinant Proteins  
**Description:** Recombinant protein of human SSU72 RNA polymerase II CTD phosphatase homolog (S. cerevisiae) (SSU72), 1 mg

**Species:** Human

**Expression Host:** HEK293T

**Expression cDNA Clone or AA Sequence:** >RC200900 protein sequence  
**Red**=Cloning site **Green**=Tags(s)

MPSSPLRVAVVCSSNQNRSM EAHNILSKRGFSVRSFGTGTHVKLPGPAPDKPNVYDFKTTYDQMYNDLLR  
KDKELYTQNGILHMLDRNKRIKPRPERFQNCCKDLFDLILTCEERVYDQVVEDLNSREQETCQPVHVVNVD  
IQDNHEEATLGAF LICELCQC IQHTEDMENEIDELLQEFEEKSGRTFLHTVCFY

**TRTRPLEQKLISEEDLAANDILDYKDDDDKV**

**Tag:** C-Myc/DDK

**Predicted MW:** 22.4 kDa

**Concentration:** >0.05 µg/µL as determined by microplate BCA method

**Purity:** > 80% as determined by SDS-PAGE and Coomassie blue staining

**Buffer:** 25 mM Tris-HCl, 100 mM glycine, pH 7.3, 10% glycerol

**Preparation:** Recombinant protein was captured through anti-DDK affinity column followed by conventional chromatography steps.

**Note:** For testing in cell culture applications, please filter before use. Note that you may experience some loss of protein during the filtration process.

**Storage:** Store at -80°C.

**Stability:** Stable for 12 months from the date of receipt of the product under proper storage and handling conditions. Avoid repeated freeze-thaw cycles.

**RefSeq:** [NP\\_054907](#)

**Locus ID:** 29101

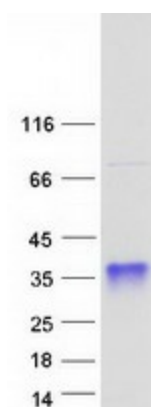
**UniProt ID:** [Q9NP77](#)



[View online »](#)

RefSeq Size:	1319
Cytogenetics:	1p36.33
RefSeq ORF:	582
Synonyms:	HSPC182; PNAS-120
Summary:	Protein phosphatase that catalyzes the dephosphorylation of the C-terminal domain of RNA polymerase II. Plays a role in RNA processing and termination. Plays a role in pre-mRNA polyadenylation via its interaction with SYMPK.[UniProtKB/Swiss-Prot Function]
Protein Families:	Druggable Genome

### Product images:



Coomassie blue staining of purified SSU72 protein (Cat# [TP300900]). The protein was produced from HEK293T cells transfected with SSU72 cDNA clone (Cat# [RC200900]) using MegaTran 2.0 (Cat# [TT210002]).