

Product datasheet for **TP300893M**

OTUD5 (NM_017602) Human Recombinant Protein

Product data:

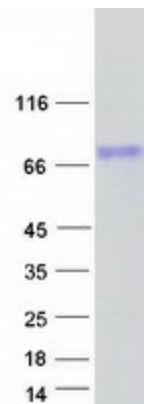
Product Type:	Recombinant Proteins
Description:	Recombinant protein of human OTU domain containing 5 (OTUD5), transcript variant 1, 100 µg
Species:	Human
Expression Host:	HEK293T
Expression cDNA Clone or AA Sequence:	>RC200893 representing NM_017602 Red =Cloning site Green =Tags(s)
	<p>MTILPKKKPPPPDADPANEP PPPGPMPPAPRRGGGVGVGGGGTGVGGGDRDRDSGVVGARPRASPPQGP LPGPPGALHRWALAVPPGAVAGPRPQQASPPPCGGPGGGPGDALGAAAAGVGAAGVWVGAVGVG GCCSGPGHSKRRRQAPGVGAVGGGSPEREVEGAGYNSEDEYEAARIEAMDPATVEQQEHWFELALRDK KGFIIKQMKEDGACLFRAVADQVYGDQDMHEVVRKHCM DYLMKNADYFSNYVTEDFTTYINRKRKNNCHG NHIEMQAMAEMYNRPVEVYQYSTGTSAVEPINTFHGIHQNEDEPIRVSYHRNIHNSVNP NKATIGVGL GLPSFKPGFAEQSLMKNAIKTSEESWIEQQMLEDKKRATDWEATNEAIEEQVARES YLQWLRDQEKQARQ VRGPSQPRKASATCSSATAAASSGLEEWTSRSPRQRSSASSPEHPHELHAELGMKPPSPGTVLALAKPPSP CAPGTSSQFSAGADRATSPLVSLYPALECRALIQQMSPSAFGLNDWDDDEILASVLAVSQQEYLD SMKKN KVHRDPPPKS</p> <p>TRTRPLEQKLISEEDLAANDILDYKDDDDKV</p>
Tag:	C-Myc/DDK
Predicted MW:	60.4 kDa
Concentration:	>0.05 µg/µL as determined by microplate BCA method
Purity:	> 80% as determined by SDS-PAGE and Coomassie blue staining
Buffer:	25 mM Tris-HCl, 100 mM glycine, pH 7.3, 10% glycerol
Preparation:	Recombinant protein was captured through anti-DDK affinity column followed by conventional chromatography steps.
Note:	For testing in cell culture applications, please filter before use. Note that you may experience some loss of protein during the filtration process.
Storage:	Store at -80°C.



[View online »](#)

Stability:	Stable for 12 months from the date of receipt of the product under proper storage and handling conditions. Avoid repeated freeze-thaw cycles.
RefSeq:	NP_060072
Locus ID:	55593
UniProt ID:	Q96G74 , A0A024QZ09
RefSeq Size:	2759
Cytogenetics:	Xp11.23
RefSeq ORF:	1713
Synonyms:	DUBA; MCAND
Summary:	This gene encodes a member of the OTU (ovarian tumor) domain-containing cysteine protease superfamily. The OTU domain confers deubiquitinase activity and the encoded protein has been shown to suppress the type I interferon-dependent innate immune response by cleaving the polyubiquitin chain from an essential type I interferon adaptor protein. Cleavage results in disassociation of the adaptor protein from a downstream signaling complex and disruption of the type I interferon signaling cascade. Alternatively spliced transcript variants encoding different isoforms have been described. [provided by RefSeq, Oct 2008]
Protein Families:	Protease
Protein Pathways:	RIG-I-like receptor signaling pathway

Product images:



Coomassie blue staining of purified OTUD5 protein (Cat# [TP300893]). The protein was produced from HEK293T cells transfected with OTUD5 cDNA clone (Cat# [RC200893]) using MegaTran 2.0 (Cat# [TT210002]).