

Product datasheet for TP300893

OTUD5 (NM_017602) Human Recombinant Protein

Product data:

Product Type: Recombinant Proteins

Description: Recombinant protein of human OTU domain containing 5 (OTUD5), transcript variant 1, 20 µg

Species: Human

Expression Host: HEK293T

Expression cDNA Clone or AA Sequence: >RC200893 representing NM_017602
Red=Cloning site Green=Tags(s)

MTILPKKKPPPPDADPANEP PPPGPMPPAPRRGGGVGVGGGGTGVGGGDRDRDSGVVGARPRASPP PQP
LPGPPGALHRWALAVPPGAVAGPRPQQASPPPCGGPGGGPGDALGAAAAGVGAAGVWVGAVGVG
GCCSGPGHSKRRRQAPGVGAVGGGSPEREVEGAGYNSEDEYEAARIEAMDPATVEQQEHWF EKALRDK
KGFIIKQMKEDGACLFRAVADQVYGDQDMHEVVRKHCM DYLMKNADYFSNYVTEDFTTYINRKRKNNCHG
NHIEMQAMAEMYNRPVEVYQYSTGTSAVEPINTFHGIHQNEDEPIRVSYHRNIHNSV NPNKATIGVGL
GLPSFKPGFAEQSLMKNAIKTSEESWIEQQMLEDKKRATDWEATNEAIEEQVARES YLQWLRDQEKQARQ
VRGPSQPRKASATCSSATAAASSGLEEWTSRSPRQRSSASSPEHPHELHAELGMKPPSPGTVLALAKPPSP
CAPGTSSQFSAGADRATSPLVSLYPALECRALIQQMSPSAFGLNDWDDDEILASVLAVSQQEYLD SMKKN
KVHRDPPPKS

TRTRPLEQKLISEEDLAANDILDYKDDDDKV

Tag: C-Myc/DDK

Predicted MW: 60.4 kDa

Concentration: >0.05 µg/µL as determined by microplate BCA method

Purity: > 80% as determined by SDS-PAGE and Coomassie blue staining

Buffer: 25 mM Tris-HCl, 100 mM glycine, pH 7.3, 10% glycerol

Preparation: Recombinant protein was captured through anti-DDK affinity column followed by conventional chromatography steps.

Note: For testing in cell culture applications, please filter before use. Note that you may experience some loss of protein during the filtration process.

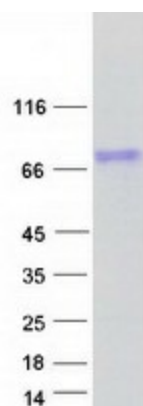
Storage: Store at -80°C.



[View online »](#)

Stability:	Stable for 12 months from the date of receipt of the product under proper storage and handling conditions. Avoid repeated freeze-thaw cycles.
RefSeq:	NP_060072
Locus ID:	55593
UniProt ID:	Q96G74 , A0A024QZ09
RefSeq Size:	2759
Cytogenetics:	Xp11.23
RefSeq ORF:	1713
Synonyms:	DUBA; MCAND
Summary:	This gene encodes a member of the OTU (ovarian tumor) domain-containing cysteine protease superfamily. The OTU domain confers deubiquitinase activity and the encoded protein has been shown to suppress the type I interferon-dependent innate immune response by cleaving the polyubiquitin chain from an essential type I interferon adaptor protein. Cleavage results in disassociation of the adaptor protein from a downstream signaling complex and disruption of the type I interferon signaling cascade. Alternatively spliced transcript variants encoding different isoforms have been described. [provided by RefSeq, Oct 2008]
Protein Families:	Protease
Protein Pathways:	RIG-I-like receptor signaling pathway

Product images:



Coomassie blue staining of purified OTUD5 protein (Cat# TP300893). The protein was produced from HEK293T cells transfected with OTUD5 cDNA clone (Cat# [RC200893]) using MegaTran 2.0 (Cat# [TT210002]).