

Product datasheet for **TP300888M**

XPNPEP3 (NM_022098) Human Recombinant Protein

Product data:

| | |
|--|---|
| Product Type: | Recombinant Proteins |
| Description: | Recombinant protein of human X-prolyl aminopeptidase (aminopeptidase P) 3, putative (XPNPEP3), 100 µg |
| Species: | Human |
| Expression Host: | HEK293T |
| Expression cDNA Clone or AA Sequence: | >RC200888 protein sequence Red =Cloning site Green =Tags(s) |

MPWLLSAPKLVPVANVRGLSGCMLCSQRRYSLQVPERRIPNRYLGQSPFTHPHLLRPGEVTPGLSQV
EYALRRHKLMSLIQKEAQQSGTDQTVVLSNPTYYSNDIPYTFHQDNNFLYLCGFQEPDSILVLQSLP
GKQLPSHKAILFVPRRDPRELWDGPRSGTDGAIALTGVDAYTLEEFQHLLPKMKAETNMVWYDWMRPS
HAQLHSDYMQPLTEAKAKSKNKVRGVQQLIQLRLIKSPAIEIRMQIAGKLTSAFIETMFTSKAPVEEA
FLYAKFEFECRARGADILAYPPVAGGNRSNTLHYVKNNQLIKDGEMVLLDGGCESSCYVSDITRTWPVN
GRFTAPQAELYEAVLEIQRDCLALCFPGTSLENIYSMMLTLIGQKLKDLGIMKNIKENNAFKAARKYCPH
HVGHYLGMDVHDTDPMPRSLPLQPGMVITIEPGIYIPEDDKDAPEKFRGLGVRIEDDVVVTQDSPFILSA
DCPKEMNDIEQICSQAS

TRTRPLEQKLISEEDLAANDILDYKDDDDKV

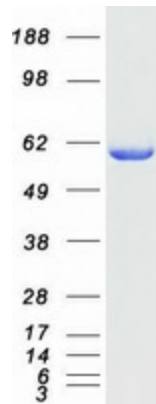
| | |
|-----------------------|--|
| Tag: | C-Myc/DDK |
| Predicted MW: | 56.9 kDa |
| Concentration: | >0.05 µg/µL as determined by microplate BCA method |
| Purity: | > 80% as determined by SDS-PAGE and Coomassie blue staining |
| Buffer: | 25 mM Tris-HCl, 100 mM glycine, pH 7.3, 10% glycerol |
| Preparation: | Recombinant protein was captured through anti-DDK affinity column followed by conventional chromatography steps. |
| Note: | For testing in cell culture applications, please filter before use. Note that you may experience some loss of protein during the filtration process. |
| Storage: | Store at -80°C. |



[View online »](#)

| | |
|--------------------------|---|
| Stability: | Stable for 12 months from the date of receipt of the product under proper storage and handling conditions. Avoid repeated freeze-thaw cycles. |
| RefSeq: | NP_071381 |
| Locus ID: | 63929 |
| UniProt ID: | Q9NQH7 |
| RefSeq Size: | 8027 |
| Cytogenetics: | 22q13.2 |
| RefSeq ORF: | 1521 |
| Synonyms: | APP3; ICP55; NPHPL1 |
| Summary: | The protein encoded by this gene belongs to the family of X-pro-aminopeptidases that utilize a metal cofactor, and remove the N-terminal amino acid from peptides with a proline residue in the penultimate position. This protein has been shown to localize to the mitochondria of renal cells, and have a role in ciliary function. Mutations in this gene are associated with nephronophthisis-like nephropathy-1. Alternatively spliced transcript variants encoding different isoforms have been noted for this gene, however, expression of some of these isoforms in vivo is not known.[provided by RefSeq, Mar 2011] |
| Protein Families: | Druggable Genome, Protease |

Product images:



Coomassie blue staining of purified XPNPEP3 protein (Cat# [TP300888]). The protein was produced from HEK293T cells transfected with XPNPEP3 cDNA clone (Cat# [RC200888]) using MegaTran 2.0 (Cat# [TT210002]).