

## Product datasheet for **TP300888L**

### **XPNPEP3 (NM\_022098) Human Recombinant Protein**

#### **Product data:**

<b>Product Type:</b>	Recombinant Proteins
<b>Description:</b>	Recombinant protein of human X-prolyl aminopeptidase (aminopeptidase P) 3, putative (XPNPEP3), 1 mg
<b>Species:</b>	Human
<b>Expression Host:</b>	HEK293T
<b>Expression cDNA Clone or AA Sequence:</b>	>RC200888 protein sequence <b>Red</b> =Cloning site <b>Green</b> =Tags(s)

MPWLLSAPKLVPVANVRGLSGCMLCSQRRYSLQVPERRIPNRYLGQSPFTHPHLLRPGEVTPGLSQV  
EYALRRHKLMSLIQKEAQQSGTDQTWVLSNPTYYSNDIPYTFHQDNNFLYLCGFQEPDSILVLQSLP  
GKQLPSHKAILFVPRRDPRELWDGPRSGTDGAIALTGVDAYTLEEFQHLLPKMKAETNMVWYDWMRPS  
HAQLHSDYMQPLTEAKAKSKNKVRGVQQLIQLRLIKSPAIEIRMQIAGKLTSAFIETMFTSKAPVEEA  
FLYAKFEFECRARGADILAYPPVAGGNRSNTLHYVKNNQLIKDGEMVLLDGGCESSCYVSDITRTWPVN  
GRFTAPQAELYEAVLEIQRDCLALCFPGTSLENIYSMMLTLIGQKLKDLGIMKNIKENNAFKAARKYCPH  
HVGHYLGMDVHDTDPMPRSLPLQPGMVITIEPGIYIPEDDKDAPEKFRGLGVRIEDDVVVTQDSPFILSA  
DCPKEMNDIEQICSQAS

**TRTRPLEQKLISEEDLAANDILDYKDDDDKV**

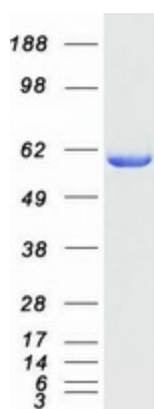
<b>Tag:</b>	C-Myc/DDK
<b>Predicted MW:</b>	56.9 kDa
<b>Concentration:</b>	>0.05 µg/µL as determined by microplate BCA method
<b>Purity:</b>	> 80% as determined by SDS-PAGE and Coomassie blue staining
<b>Buffer:</b>	25 mM Tris-HCl, 100 mM glycine, pH 7.3, 10% glycerol
<b>Preparation:</b>	Recombinant protein was captured through anti-DDK affinity column followed by conventional chromatography steps.
<b>Note:</b>	For testing in cell culture applications, please filter before use. Note that you may experience some loss of protein during the filtration process.
<b>Storage:</b>	Store at -80°C.



[View online »](#)

<b>Stability:</b>	Stable for 12 months from the date of receipt of the product under proper storage and handling conditions. Avoid repeated freeze-thaw cycles.
<b>RefSeq:</b>	<a href="#">NP_071381</a>
<b>Locus ID:</b>	63929
<b>UniProt ID:</b>	<a href="#">Q9NQH7</a>
<b>RefSeq Size:</b>	8027
<b>Cytogenetics:</b>	22q13.2
<b>RefSeq ORF:</b>	1521
<b>Synonyms:</b>	APP3; ICP55; NPHPL1
<b>Summary:</b>	The protein encoded by this gene belongs to the family of X-pro-aminopeptidases that utilize a metal cofactor, and remove the N-terminal amino acid from peptides with a proline residue in the penultimate position. This protein has been shown to localize to the mitochondria of renal cells, and have a role in ciliary function. Mutations in this gene are associated with nephronophthisis-like nephropathy-1. Alternatively spliced transcript variants encoding different isoforms have been noted for this gene, however, expression of some of these isoforms in vivo is not known.[provided by RefSeq, Mar 2011]
<b>Protein Families:</b>	Druggable Genome, Protease

### Product images:



Coomassie blue staining of purified XPNPEP3 protein (Cat# [TP300888]). The protein was produced from HEK293T cells transfected with XPNPEP3 cDNA clone (Cat# [RC200888]) using MegaTran 2.0 (Cat# [TT210002]).