

## Product datasheet for **TP300876M**

### OBFC2B (NABP2) (NM\_024068) Human Recombinant Protein

#### Product data:

Product Type:	Recombinant Proteins
Description:	Recombinant protein of human oligonucleotide/oligosaccharide-binding fold containing 2B (OBFC2B), 100 µg
Species:	Human
Expression Host:	HEK293T
Expression cDNA Clone or AA Sequence:	>RC200876 protein sequence <b>Red</b> =Cloning site <b>Green</b> =Tags(s)
	 MTTETFVKDIKPLKLNLNLFIVLETGRVTKTKDGHEVRTCKVADKTGSINISVWDDVGNLIQPDIIRL TKGYASVFKGCLTLYTGRGGDLQKIGEFCEMVEVSEPNFSEPNPEYSTQQAPNKAVQNDNPSASQPTTGP SAASPASENQNGNLSAPPGGPGGGPHPPHTPSHPSTRITRSQPNHTPAGPPGPSSNPVSNGKETRRSSK R  <b>TRTRPLEQKLISEEDLAANDILDYKDDDDKV</b>
Tag:	C-Myc/DDK
Predicted MW:	22.2 kDa
Concentration:	>0.05 µg/µL as determined by microplate BCA method
Purity:	> 80% as determined by SDS-PAGE and Coomassie blue staining
Buffer:	25 mM Tris-HCl, 100 mM glycine, pH 7.3, 10% glycerol
Preparation:	Recombinant protein was captured through anti-DDK affinity column followed by conventional chromatography steps.
Note:	For testing in cell culture applications, please filter before use. Note that you may experience some loss of protein during the filtration process.
Storage:	Store at -80°C.
Stability:	Stable for 12 months from the date of receipt of the product under proper storage and handling conditions. Avoid repeated freeze-thaw cycles.
RefSeq:	<a href="#">NP_076973</a>
Locus ID:	79035



[View online »](#)

UniProt ID: [Q9BQ15](#), [A0A024RB89](#)

RefSeq Size: 1404

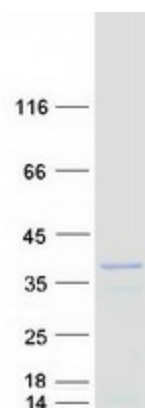
Cytogenetics: 12q13.3

RefSeq ORF: 633

Synonyms: hSSB1; OBFC2B; SOSS-B1; SSB1

Summary: Single-stranded DNA (ssDNA)-binding proteins, such as OBFC2B, are ubiquitous and essential for a variety of DNA metabolic processes, including replication, recombination, and detection and repair of damage (Richard et al., 2008 [PubMed 18449195]).[supplied by OMIM, Jun 2008]

### Product images:



Coomassie blue staining of purified NABP2 protein (Cat# [TP300876]). The protein was produced from HEK293T cells transfected with NABP2 cDNA clone (Cat# [RC200876]) using MegaTran 2.0 (Cat# [TT210002]).