

Product datasheet for **TP300872L**

GCP4 (TUBGCP4) (NM_014444) Human Recombinant Protein

Product data:

Product Type:	Recombinant Proteins
Description:	Recombinant protein of human tubulin, gamma complex associated protein 4 (TUBGCP4), 1 mg
Species:	Human
Expression Host:	HEK293T
Expression cDNA Clone or AA Sequence:	>RC200872 protein sequence Red=Cloning site Green=Tags(s)

MIHELLLALSGYPGSIFTWNKRSLQVSDPFLHPSETSVLNRLCRLGTDYIRFTEFIEQYTGHVQQQD
HHPSQQGQGLHGIYLRAFCTGLDSVLQPYRQALLDLEQFLGDPHLSISHVNYFLDQFQLLFPVSMVVV
EQIKSQKIHGQCILETVYKHSCGGLPPVRSALKILAVCHGVMYKQLSAWMLHGLLLDQHEEFFIKQGPS
SGNVSAQPEEDEDLIGGLTGKQLRELQDLRLIEEENMLAPSLKQFSRVEILPSYIPVRAEKILFVG
ESVQMFENQNVNLTRKGSILKNQEDTFAAELHRLKQQPLFSLVDFEQVVDRIIRSTVAEHLWKLMEESDL
LGQLKIIKDFYLLGRGELFQAFIDTAQHMLKTPPTAVTEHDVNVAFQQAHSKVLDDDDNLLPLLHTIEY
HGKEHKDATQAREGPSRETSPREAPASGWAALGLSYKVQWPLHILFTPAVLEKYNVVFYKLLSVRRVQAE
LQHCWALQMQRKHLKSNQTDIAIKWRLRNHMAFLVDNLQYYLQVDVLESQFSQLLHQINSTRDFESIRLAH
DHFLSNLLAQSFILLKPVFHCLNEILDLCFSFCSLVSQNLGPLDERGAAQLSILVKGFSRQSSLLFKILS
SVRNHQINSDLAQLLLRLDYNKYTQAGGTLGSFGM

TRTRPLEQKLISEEDLAANDILDYKDDDDKV

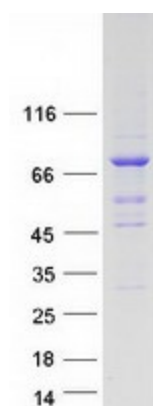
Tag:	C-Myc/DDK
Predicted MW:	75.8 kDa
Concentration:	>0.05 µg/µL as determined by microplate BCA method
Purity:	> 80% as determined by SDS-PAGE and Coomassie blue staining
Buffer:	25 mM Tris-HCl, 100 mM glycine, pH 7.3, 10% glycerol
Preparation:	Recombinant protein was captured through anti-DDK affinity column followed by conventional chromatography steps.
Note:	For testing in cell culture applications, please filter before use. Note that you may experience some loss of protein during the filtration process.
Storage:	Store at -80°C.



[View online »](#)

Stability:	Stable for 12 months from the date of receipt of the product under proper storage and handling conditions. Avoid repeated freeze-thaw cycles.
RefSeq:	NP_055259
Locus ID:	27229
UniProt ID:	Q9UGJ1
RefSeq Size:	4178
Cytogenetics:	15q15.3
RefSeq ORF:	1998
Synonyms:	76P; GCP-4; GCP4; Grip76; MCCR3
Summary:	This gene encodes a component of the gamma-tubulin ring complex, which is required for microtubule nucleation. In mammalian cells, the protein localizes to centrosomes in association with gamma-tubulin. Crystal structure analysis revealed a structure composed of five helical bundles arranged around conserved hydrophobic cores. An exposed surface area located in the C-terminal domain is essential and sufficient for direct binding to gamma-tubulin. Mutations in this gene that alter microtubule organization are associated with microcephaly and chorioretinopathy. Alternative splicing results in multiple transcript variants. [provided by RefSeq, May 2015]

Product images:



Coomassie blue staining of purified TUBGCP4 protein (Cat# [TP300872]). The protein was produced from HEK293T cells transfected with TUBGCP4 cDNA clone (Cat# [RC200872]) using MegaTran 2.0 (Cat# [TT210002]).