

Product datasheet for **TP300869M**

METTL3 (NM_019852) Human Recombinant Protein

Product data:

Product Type:	Recombinant Proteins
Description:	Recombinant protein of human methyltransferase like 3 (METTL3), 100 µg
Species:	Human
Expression Host:	HEK293T
Expression cDNA Clone or AA Sequence:	>RC200869 representing NM_019852 Red =Cloning site Green =Tags(s)

MSDTWSSIQAHHKQLDSLRLRERLQRRRQDSGHLDLRNPEAALSPTFRSDSPVPTAPTSGGPKPSTASAVP
ELATDPELEKLLHHLSDLALTLPDVAISICLAISTPDAPATQDGVESLLQKFAAQELIEVKRGLLQDDA
HPTLVTYADHSKLSAMMGAVAEKKGPEVAGTVTGQKRRAEQDSTTVAAFASSLVSGLNSSASEPAKEPA
KKSARKHAASDVLEIESLLNQSTKEQQSKKVSQEILELLNTTTAKEQSIVEKFRSRGRAQVQEFCDYGT
KEECMKASDADRPCRKLHFRRRIINKHTDESLGDCSFLNLCFHMMDTCKYVHYEIDACMDSEAPGSKDHTPS
QELALTQSVGGDSSADRLFPPQWICCDIRYLDVSIKGFVVMADPPWDIHMELPYGTLTDDMRRNLNIP
VLQDDGFLFWVTGRAMELGRECLNLWGYERVDEIIVVKTNLQRIIRTGRTGHWLNLHGKEHCLVGVKGN
PQGFNQGLDCDVIVAEVRSTSHKPDEIYGMIERLSPGTRKIELFGRPHNVQPNWITLGNQLDGIHLLDPD
VWARFKQRYPDGIISKPKNL

TRTRPLEQKLISEEDLAANDILDYKDDDDKV

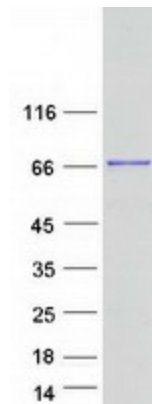
Tag:	C-Myc/DDK
Predicted MW:	64.3 kDa
Concentration:	>0.05 µg/µL as determined by microplate BCA method
Purity:	> 80% as determined by SDS-PAGE and Coomassie blue staining
Buffer:	25 mM Tris-HCl, 100 mM glycine, pH 7.3, 10% glycerol
Preparation:	Recombinant protein was captured through anti-DDK affinity column followed by conventional chromatography steps.
Note:	For testing in cell culture applications, please filter before use. Note that you may experience some loss of protein during the filtration process.
Storage:	Store at -80°C.



[View online »](#)

Stability:	Stable for 12 months from the date of receipt of the product under proper storage and handling conditions. Avoid repeated freeze-thaw cycles.
RefSeq:	NP_062826
Locus ID:	56339
UniProt ID:	Q86U44
RefSeq Size:	1975
Cytogenetics:	14q11.2
RefSeq ORF:	1740
Synonyms:	hMETTL3; IME4; M6A; MT-A70; Spo8
Summary:	This gene encodes the 70 kDa subunit of MT-A which is part of N6-adenosine-methyltransferase. This enzyme is involved in the posttranscriptional methylation of internal adenosine residues in eukaryotic mRNAs, forming N6-methyladenosine. [provided by RefSeq, Jul 2008]

Product images:



Coomassie blue staining of purified METTL3 protein (Cat# [TP300869]). The protein was produced from HEK293T cells transfected with METTL3 cDNA clone (Cat# [RC200869]) using MegaTran 2.0 (Cat# [TT210002]).