

Product datasheet for **TP300869L**

METTL3 (NM_019852) Human Recombinant Protein

Product data:

Product Type: Recombinant Proteins
Description: Recombinant protein of human methyltransferase like 3 (METTL3), 1 mg
Species: Human
Expression Host: HEK293T
Expression cDNA Clone or AA Sequence: >RC200869 representing NM_019852
Red=Cloning site **Green**=Tags(s)

MSDTWSSIQAHHKQLDSLRLRERLQRRRKQDSGHLDLRNPEAALSPTFRSDSPVPTAPTSGGPKPSTASAVP
ELATDPELEKLLHHLSDLALTLPDVAISICLAISTPDAPATQDGVESLLQKFAAQELIEVKRGLLQDDA
HPTLVYADHSKLSAMMGAVAEKKGPEVAGTVTGQKRRAEQDSTTVAAFASSLVSGLNSSASEPAKEPA
KKSARKHAASDVLEIESLLNQSTKEQQSKKVSQEILELLNTTTAKEQSIVEKFRSRGRAQVQEFCDYGT
KEECMKASDADRPCRKLHFRRRIINKHTDESLGDCSFLNTCFHMDTCKYVHYEIDACMDSEAPGSKDHTPS
QELALTQSVGGDSSADRLFPPQWICCDIRYLDVSIKGFVVMADPPWDIHMELPYGTLTDDMRRNLNIP
VLQDDGFLFWVTGRAMELGRECLNLWGYERVDEIIVVKTNLQRIIRTGRTGHWLNLHGKEHCLVGVKGN
PQGFNQGLDCDVIVAEVRSTSHKPDEIYGMIERLSPGTRKIELFGRPHNVQPNWITLGNQLDGIHLLDPD
VWARFKQRYPDGIISKPKNL

TRTRPLEQKLISEEDLAANDILDYKDDDDKV

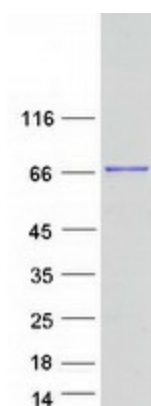
Tag: C-Myc/DDK
Predicted MW: 64.3 kDa
Concentration: >0.05 µg/µL as determined by microplate BCA method
Purity: > 80% as determined by SDS-PAGE and Coomassie blue staining
Buffer: 25 mM Tris-HCl, 100 mM glycine, pH 7.3, 10% glycerol
Preparation: Recombinant protein was captured through anti-DDK affinity column followed by conventional chromatography steps.
Note: For testing in cell culture applications, please filter before use. Note that you may experience some loss of protein during the filtration process.
Storage: Store at -80°C.



[View online »](#)

Stability:	Stable for 12 months from the date of receipt of the product under proper storage and handling conditions. Avoid repeated freeze-thaw cycles.
RefSeq:	NP_062826
Locus ID:	56339
UniProt ID:	Q86U44
RefSeq Size:	1975
Cytogenetics:	14q11.2
RefSeq ORF:	1740
Synonyms:	hMETTL3; IME4; M6A; MT-A70; Spo8
Summary:	This gene encodes the 70 kDa subunit of MT-A which is part of N6-adenosine-methyltransferase. This enzyme is involved in the posttranscriptional methylation of internal adenosine residues in eukaryotic mRNAs, forming N6-methyladenosine. [provided by RefSeq, Jul 2008]

Product images:



Coomassie blue staining of purified METTL3 protein (Cat# [TP300869]). The protein was produced from HEK293T cells transfected with METTL3 cDNA clone (Cat# [RC200869]) using MegaTran 2.0 (Cat# [TT210002]).