

## Product datasheet for **TP300869**

### **METTL3 (NM\_019852) Human Recombinant Protein**

#### **Product data:**

<b>Product Type:</b>	Recombinant Proteins
<b>Description:</b>	Recombinant protein of human methyltransferase like 3 (METTL3), 20 µg
<b>Species:</b>	Human
<b>Expression Host:</b>	HEK293T
<b>Expression cDNA Clone or AA Sequence:</b>	>RC200869 representing NM_019852 <b>Red</b> =Cloning site <b>Green</b> =Tags(s)

MSDTWSSIQAHHKQLDSLRLRQRQRKQDSGHLDLRNPEAALSPTFRSDSPVPTAPTSGGPKPSTASAVP  
ELATDPELEKLLHHLSDLALTLPDVAISICLAISTPDAPATQDGVESLLQKFAAQELIEVKRGLLQDDA  
HPTLVTYADHSKLSAMMGAVAEKKGPEVAGTVTGQKRRAEQDSTTVAAFASSLVSGLNSSASEPAKEPA  
KKSARKHAASDVLEIESLLNQSTKEQQSKKVSQEILELLNTTTAKEQSIVEKFRSRGRAQVQEFCDYGT  
KEECMKASDADRPCRKLHFRRRIINKHTDESLGDCSFLNLCFHMMDTCKYVHYEIDACMDSEAPGSKDHTPS  
QELALTQSVGGDSSADRLFPPQWICCDIRYLDVSIKGFVVMADPPWDIHMELPYGTLTDDMRRNLNIP  
VLQDDGFLFWVTGRAMELGRECLNLWGYERVDEIIVVKTNLQRIIRTGRTGHWLNLHGKEHCLVGVKGN  
PQGFNQGLDCDVIVAEVRSTSHKPDEIYGMIERLSPGTRKIELFGRPHNVQPNWITLGNQLDGIHLLDPD  
VWARFKQRYPDGIISKPKNL

**TRTRPLEQKLISEEDLAANDILDYKDDDDKV**

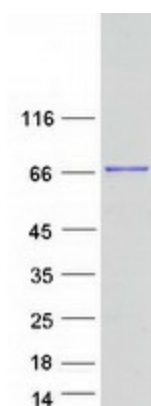
<b>Tag:</b>	C-Myc/DDK
<b>Predicted MW:</b>	64.3 kDa
<b>Concentration:</b>	>0.05 µg/µL as determined by microplate BCA method
<b>Purity:</b>	> 80% as determined by SDS-PAGE and Coomassie blue staining
<b>Buffer:</b>	25 mM Tris-HCl, 100 mM glycine, pH 7.3, 10% glycerol
<b>Preparation:</b>	Recombinant protein was captured through anti-DDK affinity column followed by conventional chromatography steps.
<b>Note:</b>	For testing in cell culture applications, please filter before use. Note that you may experience some loss of protein during the filtration process.
<b>Storage:</b>	Store at -80°C.



[View online »](#)

Stability:	Stable for 12 months from the date of receipt of the product under proper storage and handling conditions. Avoid repeated freeze-thaw cycles.
RefSeq:	<a href="#">NP_062826</a>
Locus ID:	56339
UniProt ID:	<a href="#">Q86U44</a>
RefSeq Size:	1975
Cytogenetics:	14q11.2
RefSeq ORF:	1740
Synonyms:	hMETTL3; IME4; M6A; MT-A70; Spo8
Summary:	This gene encodes the 70 kDa subunit of MT-A which is part of N6-adenosine-methyltransferase. This enzyme is involved in the posttranscriptional methylation of internal adenosine residues in eukaryotic mRNAs, forming N6-methyladenosine. [provided by RefSeq, Jul 2008]

### Product images:



Coomassie blue staining of purified METTL3 protein (Cat# TP300869). The protein was produced from HEK293T cells transfected with METTL3 cDNA clone (Cat# [RC200869]) using MegaTran 2.0 (Cat# [TT210002]).