

Product datasheet for **TP300862M**

robld3 (LAMTOR2) (NM_014017) Human Recombinant Protein

Product data:

Product Type:	Recombinant Proteins
Description:	Recombinant protein of human roadblock domain containing 3 (ROBLD3), transcript variant 1, 100 µg
Species:	Human
Expression Host:	HEK293T
Expression cDNA Clone or AA Sequence:	>RC200862 protein sequence Red =Cloning site Green =Tags(s)

MLRPKALTQVLSQANTGGVQSTLLLNNEGSL LAYSGYGD TDARVTAAIASNIWAA YDRNGNQAFNEDNLK
FILMDCMEGRVAITRVANLLLCMYAKETVGF GMLKAKAQALVQYLEEPLTQVAAS

TRTRPLEQKLISEEDLAANDILDYKDDDDKV

Tag:	C-Myc/DDK
Predicted MW:	13.3 kDa
Concentration:	>0.05 µg/µL as determined by microplate BCA method
Purity:	> 80% as determined by SDS-PAGE and Coomassie blue staining
Buffer:	25 mM Tris-HCl, 100 mM glycine, pH 7.3, 10% glycerol
Preparation:	Recombinant protein was captured through anti-DDK affinity column followed by conventional chromatography steps.
Note:	For testing in cell culture applications, please filter before use. Note that you may experience some loss of protein during the filtration process.
Storage:	Store at -80°C.
Stability:	Stable for 12 months from the date of receipt of the product under proper storage and handling conditions. Avoid repeated freeze-thaw cycles.
RefSeq:	NP_054736
Locus ID:	28956
UniProt ID:	Q9Y2Q5
RefSeq Size:	699



[View online »](#)

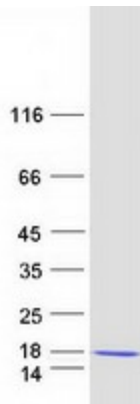
Cytogenetics: 1q22

RefSeq ORF: 375

Synonyms: ENDAP; HSPC003; MAPBPIP; MAPKSP1AP; p14; Ragulator2; ROBLD3

Summary: The product of this gene is highly conserved with a mouse protein associated with the cytoplasmic face of late endosomes and lysosomes. The mouse protein interacts with MAPK scaffold protein 1, a component of the mitogen-activated protein kinase pathway. In humans, a mutation in this gene has been associated with a primary immunodeficiency syndrome, and suggests a role for this protein in endosomal biogenesis. Multiple transcript variants encoding different isoforms have been found for this gene. [provided by RefSeq, Feb 2009]

Product images:



Coomassie blue staining of purified LAMTOR2 protein (Cat# [TP300862]). The protein was produced from HEK293T cells transfected with LAMTOR2 cDNA clone (Cat# [RC200862]) using MegaTran 2.0 (Cat# [TT210002]).