

Product datasheet for **TP300862L**

robld3 (LAMTOR2) (NM_014017) Human Recombinant Protein

Product data:

Product Type: Recombinant Proteins

Description: Recombinant protein of human roadblock domain containing 3 (ROBLD3), transcript variant 1, 1 mg

Species: Human

Expression Host: HEK293T

Expression cDNA Clone or AA Sequence: >RC200862 protein sequence
Red=Cloning site **Green**=Tags(s)

MLRPKALTQVLSQANTGGVQSTLLLNNEGSL LAYSGYGD TDARVTAAIASNIWAA YDRNGNQAFNEDNLK
FILMDCMEGRVAITRVANLLLCMYAKETVGF GMLKAKAQALVQYLEEPLTQVAAS

TRTRPLEQKLISEEDLAANDILDYKDDDDKV

Tag: C-Myc/DDK

Predicted MW: 13.3 kDa

Concentration: >0.05 µg/µL as determined by microplate BCA method

Purity: > 80% as determined by SDS-PAGE and Coomassie blue staining

Buffer: 25 mM Tris-HCl, 100 mM glycine, pH 7.3, 10% glycerol

Preparation: Recombinant protein was captured through anti-DDK affinity column followed by conventional chromatography steps.

Note: For testing in cell culture applications, please filter before use. Note that you may experience some loss of protein during the filtration process.

Storage: Store at -80°C.

Stability: Stable for 12 months from the date of receipt of the product under proper storage and handling conditions. Avoid repeated freeze-thaw cycles.

RefSeq: [NP_054736](#)

Locus ID: 28956

UniProt ID: [Q9Y2Q5](#)

RefSeq Size: 699



[View online »](#)

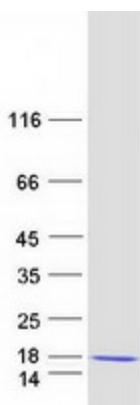
Cytogenetics: 1q22

RefSeq ORF: 375

Synonyms: ENDAP; HSPC003; MAPBPIP; MAPKSP1AP; p14; Ragulator2; ROBLD3

Summary: The product of this gene is highly conserved with a mouse protein associated with the cytoplasmic face of late endosomes and lysosomes. The mouse protein interacts with MAPK scaffold protein 1, a component of the mitogen-activated protein kinase pathway. In humans, a mutation in this gene has been associated with a primary immunodeficiency syndrome, and suggests a role for this protein in endosomal biogenesis. Multiple transcript variants encoding different isoforms have been found for this gene. [provided by RefSeq, Feb 2009]

Product images:



Coomassie blue staining of purified LAMTOR2 protein (Cat# [TP300862]). The protein was produced from HEK293T cells transfected with LAMTOR2 cDNA clone (Cat# [RC200862]) using MegaTran 2.0 (Cat# [TT210002]).