

Product datasheet for **TP300859L**

C3orf26 (CMSS1) (NM_032359) Human Recombinant Protein

Product data:

Product Type: Recombinant Proteins

Description: Recombinant protein of human chromosome 3 open reading frame 26 (C3orf26), 1 mg

Species: Human

Expression Host: HEK293T

Expression cDNA Clone or AA Sequence: >RC200859 protein sequence
Red=Cloning site **Green**=Tags(s)

MADDLGDEWWENQPTGAGSSPEASDGE GEGDTEVMQQETVVPVPVSEKTKQPKECF LIQPKERKENTTKT
RKR RKKKITDVLAKSEPKPLPEDLQKLMKDYSSRRLVIELEELNLPDSCFLKANDLTHSLSSYLK GIC
PKWVKLRKNHSEKKSVM LLIICSSAVRALELIRSMTAFRGDGKVIKLF AKHIK VQAQVKLLEKRVVHLGV
GTPGRIKELVKQGG LNL SPLKFLVFDWNWRDQKLRMMMDIPEIRKEVFELLEMGVLSLCKSES LKLG L F

TRTRPLEQKLISEEDLAANDILDYKDDDDKV

Tag: C-Myc/DDK

Predicted MW: 31.7 kDa

Concentration: >0.05 µg/µL as determined by microplate BCA method

Purity: > 80% as determined by SDS-PAGE and Coomassie blue staining

Buffer: 25 mM Tris-HCl, 100 mM glycine, pH 7.3, 10% glycerol

Preparation: Recombinant protein was captured through anti-DDK affinity column followed by conventional chromatography steps.

Note: For testing in cell culture applications, please filter before use. Note that you may experience some loss of protein during the filtration process.

Storage: Store at -80°C.

Stability: Stable for 12 months from the date of receipt of the product under proper storage and handling conditions. Avoid repeated freeze-thaw cycles.

RefSeq: [NP_115735](#)

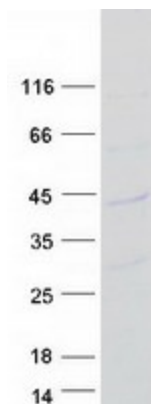
Locus ID: 84319

UniProt ID: [Q9BQ75](#)



[View online »](#)

RefSeq Size: 1230
Cytogenetics: 3q12.1
RefSeq ORF: 837
Synonyms: C3orf26

Product images:

Coomassie blue staining of purified CMSS1 protein (Cat# [TP300859]). The protein was produced from HEK293T cells transfected with CMSS1 cDNA clone (Cat# [RC200859]) using MegaTran 2.0 (Cat# [TT210002]).