

Product datasheet for **TP300842M**

RPE (NM_199229) Human Recombinant Protein

Product data:

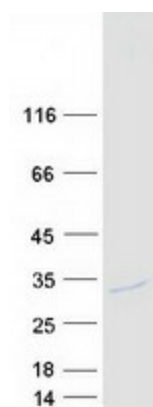
Product Type:	Recombinant Proteins
Description:	Recombinant protein of human ribulose-5-phosphate-3-epimerase (RPE), transcript variant 1, 100 µg
Species:	Human
Expression Host:	HEK293T
Expression cDNA Clone or AA Sequence:	>RC200842 protein sequence Red =Cloning site Green =Tags(s)
	 MASGCKIGPSILNSDLANLGAECLRMLDSGADYLHLDVMDGHFVPNITFGHPWESLRKQLGQDPFFDMH MMVSKPEQWVKPMAVAGANQYTFHLEATENPGALIKDIRENGMKVGLAIKPGTSVEYLAPWANQIDMALV MTVEPGFGGQKFMEDMMPKVHWLRTQFPSLDIEVDGGVGPDTVHKCAEAGANMIVSGSAIMRSEDPRSVI NLLRNVCEAAQKRSLDR TRTRPLEQKLISEEDLAANDILDYKDDDDKV
Tag:	C-Myc/DDK
Predicted MW:	24.7 kDa
Concentration:	>0.05 µg/µL as determined by microplate BCA method
Purity:	> 80% as determined by SDS-PAGE and Coomassie blue staining
Buffer:	25 mM Tris-HCl, 100 mM glycine, pH 7.3, 10% glycerol
Preparation:	Recombinant protein was captured through anti-DDK affinity column followed by conventional chromatography steps.
Note:	For testing in cell culture applications, please filter before use. Note that you may experience some loss of protein during the filtration process.
Storage:	Store at -80°C.
Stability:	Stable for 12 months from the date of receipt of the product under proper storage and handling conditions. Avoid repeated freeze-thaw cycles.
RefSeq:	<u>NP_954699</u>
Locus ID:	6120



[View online »](#)

UniProt ID:	Q96AT9
RefSeq Size:	3265
Cytogenetics:	2q34
RefSeq ORF:	684
Synonyms:	RPE2-1
Summary:	Catalyzes the reversible epimerization of D-ribulose 5-phosphate to D-xylulose 5-phosphate. [UniProtKB/Swiss-Prot Function]
Protein Pathways:	Metabolic pathways, Pentose and glucuronate interconversions, Pentose phosphate pathway

Product images:



Coomassie blue staining of purified RPE protein (Cat# [TP300842]). The protein was produced from HEK293T cells transfected with RPE cDNA clone (Cat# [RC200842]) using MegaTran 2.0 (Cat# [TT210002]).