

## Product datasheet for **TP300838**

### KCTD15 (NM\_024076) Human Recombinant Protein

#### Product data:

Product Type:	Recombinant Proteins
Description:	Recombinant protein of human potassium channel tetramerisation domain containing 15 (KCTD15), transcript variant 1, 20 µg
Species:	Human
Expression Host:	HEK293T
Expression cDNA Clone or AA Sequence:	>RC200838 protein sequence <b>Red</b> =Cloning site <b>Green</b> =Tags(s)
	MPHRKERPSGSSLHTHGSTGTAEGGNMSRLSLTRSPVSPPLAAQGIPLPAQLTKSNAPVHIDVGSHMYTSS LATLTKYPDSRISRLFNGTEPIVLDSLKQHYFIDRDGEIFRYVLSFLRTSKLLLPDDFKDFSLLYEEARY YQLQPMVRELERWQQEQEQRRRSRACDCLVVRVTPDLGERIALSGEKALIEEVFPETGDVMCNSVNAGW N QDPTHVIRFPLNGYCRNLNSVQDVL
	<b>TRTRPLEQKLISEEDLAANDILDYKDDDDKV</b>
Tag:	C-Myc/DDK
Predicted MW:	26.3 kDa
Concentration:	>0.05 µg/µL as determined by microplate BCA method
Purity:	> 80% as determined by SDS-PAGE and Coomassie blue staining
Buffer:	25 mM Tris-HCl, 100 mM glycine, pH 7.3, 10% glycerol
Preparation:	Recombinant protein was captured through anti-DDK affinity column followed by conventional chromatography steps.
Note:	For testing in cell culture applications, please filter before use. Note that you may experience some loss of protein during the filtration process.
Storage:	Store at -80°C.
Stability:	Stable for 12 months from the date of receipt of the product under proper storage and handling conditions. Avoid repeated freeze-thaw cycles.
RefSeq:	<u><a href="#">NP_076981</a></u>
Locus ID:	79047



[View online »](#)

UniProt ID: [Q96S11](#)

RefSeq Size: 4935

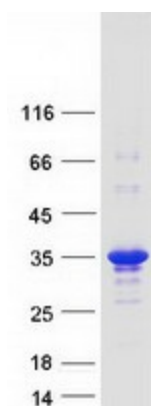
Cytogenetics: 19q13.11

RefSeq ORF: 702

**Summary:** During embryonic development, interferes with neural crest formation (By similarity). Inhibits AP2 transcriptional activity by interaction with its activation domain.[UniProtKB/Swiss-Prot Function]

**Protein Families:** Ion Channels: Other

### Product images:



Coomassie blue staining of purified KCTD15 protein (Cat# TP300838). The protein was produced from HEK293T cells transfected with KCTD15 cDNA clone (Cat# [RC200838]) using MegaTran 2.0 (Cat# [TT210002]).