

Product datasheet for **TP300821L**

CDCA3 (NM_031299) Human Recombinant Protein

Product data:

Product Type: Recombinant Proteins

Description: Recombinant protein of human cell division cycle associated 3 (CDCA3), 1 mg

Species: Human

Expression Host: HEK293T

Expression cDNA Clone or AA Sequence: >RC200821 protein sequence
Red=Cloning site **Green**=Tags(s)

MGSAKSVPVTPARPPPHNKHLARVADPRSPSAGILRTPIQVESSPQPGLPAGEQLEGLKHAQDSDPRSPT
LGIARTPMKTSSGDPPSPLVKQLSEVFETEDSKSNLPPPEVLPPEAPLSSSELDLPLGTQLSVEEQMPPWN
QTEFPSKQVFSKEEARQPTETPVASQSSDKPSRDPETPRSSGSMRNRWKPNSKVLGRSPLTILQDDNSP
GTLTLRQGKRPSLSENVSELKEGAILGTGRLLKTGGRAWEQGDHDKENQHFPPLVES

TRTRPLEQKLISEEDLAANDILDYKDDDDKV

Tag: C-Myc/DDK

Predicted MW: 28.8 kDa

Concentration: >0.05 µg/µL as determined by microplate BCA method

Purity: > 80% as determined by SDS-PAGE and Coomassie blue staining

Buffer: 25 mM Tris-HCl, 100 mM glycine, pH 7.3, 10% glycerol

Preparation: Recombinant protein was captured through anti-DDK affinity column followed by conventional chromatography steps.

Note: For testing in cell culture applications, please filter before use. Note that you may experience some loss of protein during the filtration process.

Storage: Store at -80°C.

Stability: Stable for 12 months from the date of receipt of the product under proper storage and handling conditions. Avoid repeated freeze-thaw cycles.

RefSeq: [NP_112589](#)

Locus ID: 83461

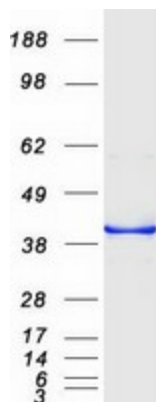
UniProt ID: [Q99618](#)



[View online »](#)

| | |
|---------------|--|
| RefSeq Size: | 1944 |
| Cytogenetics: | 12p13.31 |
| RefSeq ORF: | 804 |
| Synonyms: | GRCC8; TOME-1 |
| Summary: | F-box-like protein which is required for entry into mitosis. Acts by participating in E3 ligase complexes that mediate the ubiquitination and degradation of WEE1 kinase at G2/M phase (By similarity).[UniProtKB/Swiss-Prot Function] |

Product images:



Coomassie blue staining of purified CDCA3 protein (Cat# [TP300821]). The protein was produced from HEK293T cells transfected with CDCA3 cDNA clone (Cat# [RC200821]) using MegaTran 2.0 (Cat# [TT210002]).