

## Product datasheet for **TP300807L**

### Lamin B2 (LMNB2) (NM\_032737) Human Recombinant Protein

#### Product data:

|                                       |   |
|---------------------------------------|---|
| Product Type:                         | Recombinant Proteins  |
| Description:                          | Recombinant protein of human lamin B2 (LMNB2), 1 mg                             |
| Species:                              | Human   |
| Expression Host:                      | HEK293T   |
| Expression cDNA Clone or AA Sequence: | >Peptide sequence encoded by RC200807<br>Blue=ORF Red=Cloning site Green=Tag(s) |

MSPSPGRRREQRRPRAAATMATPLPGRAGGPATPLSPTRLSRLQEKEELRELNDRLAHYIDRVRALEL  
 ENDRLLLKISEKEEVTTREVSGIKALYESELADARRVLDETARERARLQIEIGKLRAELDEVNKSARKK  
 EGELTVAQGRVKDLESLFHRSEVELAAALSDKRGLESVAELRAQLAKAEDGHAVAKKQLEKETLMRVD  
 LENRCQSLQEELDFRKSVEEVEVRETRRRHERRLVEVDSSRQEQYDFKMAQALEELRSQHDEQVRLYKL  
 ELEQTYQAKLSDAKLSSDQNDKAASAAREELKEARMRLESLSYQLSGLQKQASAAEDRIRELEEAMAGE  
 RDKFRKMLDAKEQEMTEMRDVMQQQLAEYQELLDVKLALDMEINAYRKLLEGEERLKLSPSPSSRVTV  
 SRATSSSSGSLSATGRLGRSKRKRLEVEEPLGSGPSVLGTGTGGSGGFHLAQASASGSVSIEEIDLEG  
 KVFQLKNNSDKDQSLGNWRIKRQVLEGEIEAYKFTPKYILRAGQMVTWAAAGAGVAHSPSTLVWKGQS  
 SWGTGESFRTVLVNADGEEVAMRTVKSSVMRENENGEIEEAEFGEDLFHQQGDPRTTSRGCYVM  
 TRTRPLEQKLISEEDLAANDILDYKDDDDKV

Recombinant protein using RC200807 also available, [TP300807](#)

|                |  |
|----------------|--|
| Tag:           | C-Myc/DDK  |
| Predicted MW:  | 67.5 kDa   |
| Concentration: | >0.05 µg/µL as determined by microplate BCA method   |
| Purity:        | > 80% as determined by SDS-PAGE and Coomassie blue staining  |
| Buffer:        | 25 mM Tris-HCl, 100 mM glycine, pH 7.3, 10% glycerol   |
| Preparation:   | Recombinant protein was captured through anti-DDK affinity column followed by conventional chromatography steps.                                     |
| Note:          | For testing in cell culture applications, please filter before use. Note that you may experience some loss of protein during the filtration process. |
| Storage:       | Store at -80°C.  |



[View online »](#)

**Stability:** Stable for 12 months from the date of receipt of the product under proper storage and handling conditions. Avoid repeated freeze-thaw cycles.

**RefSeq:** [NP\\_116126](#)

**Locus ID:** 84823

**UniProt ID:** [Q03252](#)

**RefSeq Size:** 4644

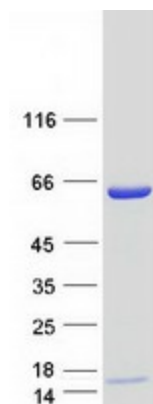
**Cytogenetics:** 19p13.3

**RefSeq ORF:** 1860

**Synonyms:** EPM9; LAMB2; LMN2; MCPH27

**Summary:** This gene encodes a B type nuclear lamin. The nuclear lamina consists of a two-dimensional matrix of proteins located next to the inner nuclear membrane. The lamin family of proteins make up the matrix and are highly conserved in evolution. During mitosis, the lamina matrix is reversibly disassembled as the lamin proteins are phosphorylated. Lamin proteins are thought to be involved in nuclear stability, chromatin structure and gene expression. Vertebrate lamins consist of two types, A and B. Mutations in this gene are associated with acquired partial lipodystrophy. [provided by RefSeq, May 2012]

### Product images:



Coomassie blue staining of purified LMNB2 protein (Cat# [TP300807]). The protein was produced from HEK293T cells transfected with LMNB2 cDNA clone (Cat# [RC200807]) using MegaTran 2.0 (Cat# [TT210002]).