

Product datasheet for **TP300807**

Lamin B2 (LMNB2) (NM_032737) Human Recombinant Protein

Product data:

Product Type:	Recombinant Proteins
Description:	Recombinant protein of human lamin B2 (LMNB2), 20 µg
Species:	Human
Expression Host:	HEK293T
Expression cDNA Clone or AA Sequence:	>Peptide sequence encoded by RC200807 Blue=ORF Red=Cloning site Green=Tag(s)

MSPSPGRRREQRRPRAAATMATPLPGRAGGPATPLSPTRLSRLQEKEELRELNDRLAHYIDRVRALEL
 ENDRLLLKISEKEEVTTREVSGIKALYESELADARRVLDETARERARLQIEIGKLRAELDEVNKSARKK
 EGELTVAQGRVKDLESLFHRSEVELAAALSDKRGLESDVAELRAQLAKAEDGHAVAKKQLEKETLMRVD
 LENRCQSLQEELDFRKSVEEVEVRETRRRHERRLVEVDSSRQEQYDFKMAQALEELRSQHDEQVRLYKL
 ELEQTYQAKLSDAKLSSDQNDKAASAAREELKEARMRLESLSYQLSGLQKQASAAEDRIRELEEAMAGE
 RDKFRKMLDAKEQEMTEMRDVMQQQLAEYQELLDVKLALDMEINAYRKLLEGEERLKLSPSPSSRVTV
 SRATSSSSGSLSATGRLGRSKRKRLEVEEPLGSGPSVLGTGTGGSGGFHLAQASASGSVSIEEIDLEG
 KVFQLKNNSDKDQSLGNWRIKRQVLEGEIEAYKFTPKYILRAGQMVTWAAAGAGVAHSPSTLVWKGQS
 SWGTGESFRTVLVNADGEEVAMRTVKKSSVMRENENGEIEEIEAEFGEDLFHQQGDPRTTSRGCYVM
 TRTRPLEQKLISEEDLAANDILDYKDDDDKV

Recombinant protein using RC200807 also available, [TP300807](#)

Tag:	C-Myc/DDK
Predicted MW:	67.5 kDa
Concentration:	>0.05 µg/µL as determined by microplate BCA method
Purity:	> 80% as determined by SDS-PAGE and Coomassie blue staining
Buffer:	25 mM Tris-HCl, 100 mM glycine, pH 7.3, 10% glycerol
Preparation:	Recombinant protein was captured through anti-DDK affinity column followed by conventional chromatography steps.
Note:	For testing in cell culture applications, please filter before use. Note that you may experience some loss of protein during the filtration process.
Storage:	Store at -80°C.



[View online »](#)

Stability: Stable for 12 months from the date of receipt of the product under proper storage and handling conditions. Avoid repeated freeze-thaw cycles.

RefSeq: [NP_116126](#)

Locus ID: 84823

UniProt ID: [Q03252](#)

RefSeq Size: 4644

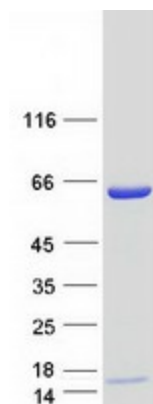
Cytogenetics: 19p13.3

RefSeq ORF: 1860

Synonyms: EPM9; LAMB2; LMN2; MCPH27

Summary: This gene encodes a B type nuclear lamin. The nuclear lamina consists of a two-dimensional matrix of proteins located next to the inner nuclear membrane. The lamin family of proteins make up the matrix and are highly conserved in evolution. During mitosis, the lamina matrix is reversibly disassembled as the lamin proteins are phosphorylated. Lamin proteins are thought to be involved in nuclear stability, chromatin structure and gene expression. Vertebrate lamins consist of two types, A and B. Mutations in this gene are associated with acquired partial lipodystrophy. [provided by RefSeq, May 2012]

Product images:



Coomassie blue staining of purified LMNB2 protein (Cat# TP300807). The protein was produced from HEK293T cells transfected with LMNB2 cDNA clone (Cat# [RC200807]) using MegaTran 2.0 (Cat# [TT210002]).