

Product datasheet for **TP300801M**

SPSB2 (NM_032641) Human Recombinant Protein

Product data:

Product Type:	Recombinant Proteins
Description:	Recombinant protein of human splA/ryanodine receptor domain and SOCS box containing 2 (SPSB2), 100 µg
Species:	Human
Expression Host:	HEK293T
Expression cDNA Clone or AA Sequence:	>RC200801 protein sequence Red =Cloning site Green =Tags(s)

MGQTALAGGSSSTPTPQALYPLDLSCEGLEELLSAPPPDLGAQRRHGWNPKDCSENIEVKEGGLYFERRP
VAQSTDGARGKRGYSRGLHAWAISWPLEQRGTHAVGVATALAPLQTDHYAALLGSNSESWGWDIGRGKL
YHQS KGPAGPQYPAGTQGEQLEVPERLLVLDMEEGTLGYAIGGTYLGPAPFRGLKGRTPAVSAVWGQC
QVRIRYLGERRAEPHSLHLSRLCVRHNLGDTLRLGQVSALPLPPAMKRYLLYQ

TRTRPLEQKLISEEDLAANDILDYKDDDDKV

Tag:	C-Myc/DDK
Predicted MW:	28.4 kDa
Concentration:	>0.05 µg/µL as determined by microplate BCA method
Purity:	> 80% as determined by SDS-PAGE and Coomassie blue staining
Buffer:	25 mM Tris-HCl, 100 mM glycine, pH 7.3, 10% glycerol
Preparation:	Recombinant protein was captured through anti-DDK affinity column followed by conventional chromatography steps.
Note:	For testing in cell culture applications, please filter before use. Note that you may experience some loss of protein during the filtration process.
Storage:	Store at -80°C.
Stability:	Stable for 12 months from the date of receipt of the product under proper storage and handling conditions. Avoid repeated freeze-thaw cycles.
RefSeq:	NP_116030
Locus ID:	84727



[View online »](#)

UniProt ID: [Q99619](#)

RefSeq Size: 1272

Cytogenetics: 12p13.31

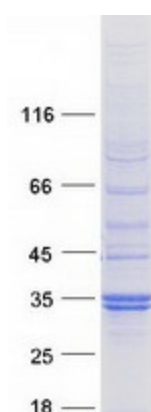
RefSeq ORF: 789

Synonyms: GRCC9; SSB2

Summary: This gene encodes a member of a subfamily of proteins containing a central SPRY (repeats in splA and RyR) domain and a C-terminal suppressor of cytokine signaling (SOCS) box. This protein plays a role in cell signaling. This gene is present in a gene-rich cluster on chromosome 12p13 in the vicinity of the CD4 antigen and triosephosphate isomerase genes. Alternative splicing results in multiple transcript variants. [provided by RefSeq, Feb 2016]

Protein Families: Druggable Genome

Product images:



Coomassie blue staining of purified SPSB2 protein (Cat# [TP300801]). The protein was produced from HEK293T cells transfected with SPSB2 cDNA clone (Cat# [RC200801]) using MegaTran 2.0 (Cat# [TT210002]).