

Product datasheet for **TP300790M**

CUEDC2 (NM_024040) Human Recombinant Protein

Product data:

Product Type: Recombinant Proteins

Description: Recombinant protein of human CUE domain containing 2 (CUEDC2), 100 µg

Species: Human

Expression Host: HEK293T

**Expression cDNA Clone
or AA Sequence:** >RC200790 protein sequence
Red=Cloning site **Green**=Tags(s)

MELERIVSAALLAFVQTHLPEADLSGLDEVIFSYVLGVLEDLGPSGPSEENFDMEAFTEMMEAYVPGFAH
IPRGTIGDMMQKLSGQLSDARNKENLQPQSSGVQGVPISEPLQRPEMLKEETRSSAAAAADTQDEATG
AEEELLPGVDVLLVFPTCSVEQAQWVLAKARGDLEEAVQMLVEGKEEGPAAWEGPNQDLPRRLRGPQKD
ELKSFILQKYMMVDSA

TRTRPLEQKLISEEDLAANDILDYKDDDDKV

Tag: C-Myc/DDK

Predicted MW: 31.8 kDa

Concentration: >0.05 µg/µL as determined by microplate BCA method

Purity: > 80% as determined by SDS-PAGE and Coomassie blue staining

Buffer: 25 mM Tris-HCl, 100 mM glycine, pH 7.3, 10% glycerol

Preparation: Recombinant protein was captured through anti-DDK affinity column followed by conventional chromatography steps.

Note: For testing in cell culture applications, please filter before use. Note that you may experience some loss of protein during the filtration process.

Storage: Store at -80°C.

Stability: Stable for 12 months from the date of receipt of the product under proper storage and handling conditions. Avoid repeated freeze-thaw cycles.

RefSeq: [NP_076945](#)

Locus ID: 79004

UniProt ID: [Q9H467](#)



[View online »](#)

RefSeq Size: 1203

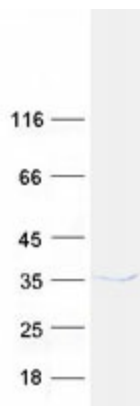
Cytogenetics: 10q24.32

RefSeq ORF: 678

Synonyms: bA18I14.5; C10orf66

Summary: Down-regulates ESR1 protein levels through the ubiquitination-proteasome pathway, regardless of the presence of 17 beta-estradiol. Also involved in 17 beta-estradiol-induced ESR1 degradation. Controls PGR protein levels through a similar mechanism.[UniProtKB/Swiss-Prot Function]

Product images:



Coomassie blue staining of purified CUEDC2 protein (Cat# [TP300790]). The protein was produced from HEK293T cells transfected with CUEDC2 cDNA clone (Cat# [RC200790]) using MegaTran 2.0 (Cat# [TT210002]).