

Product datasheet for **TP300782L**

C11orf48 (LBHD1) (NM_024099) Human Recombinant Protein

Product data:

Product Type:	Recombinant Proteins
Description:	Recombinant protein of human chromosome 11 open reading frame 48 (C11orf48), 1 mg
Species:	Human
Expression Host:	HEK293T
Expression cDNA Clone or AA Sequence:	>RC200782 protein sequence Red =Cloning site Green =Tags(s)

MALVPGRSKEDGLWTRNSPGSSQHPESPRLPNPLWDRGKIGKVEGHQHIQDFSQKSHLP SIVESSEVNE
ESGDLHLPHELLLLLDGEEEDAEAFFQDQSEEPGWAWS PQDPRSPLRTFNAGLSWGQDQDEEDACWILE
DTACLEATNHCPFDSTGSRVCRSGFVEYSHLLPPNSFEGAE EAVQTPAGVESGAASEAPGGRGCDRPR
ADHAAPPQEAGVQCTCQHYTVREEAQKTPADPACPEREDSHGSGSPFKASQD

TRTRPLEQKLISEEDLAANDILDYKDDDDKV

Tag:	C-Myc/DDK
Predicted MW:	28.6 kDa
Concentration:	>0.05 µg/µL as determined by microplate BCA method
Purity:	> 80% as determined by SDS-PAGE and Coomassie blue staining
Buffer:	25 mM Tris-HCl, 100 mM glycine, pH 7.3, 10% glycerol
Preparation:	Recombinant protein was captured through anti-DDK affinity column followed by conventional chromatography steps.
Note:	For testing in cell culture applications, please filter before use. Note that you may experience some loss of protein during the filtration process.
Storage:	Store at -80°C.
Stability:	Stable for 12 months from the date of receipt of the product under proper storage and handling conditions. Avoid repeated freeze-thaw cycles.
RefSeq:	<u>NP_077004</u>
Locus ID:	79081
UniProt ID:	<u>Q9BQE6</u>



[View online »](#)

RefSeq Size: 1357

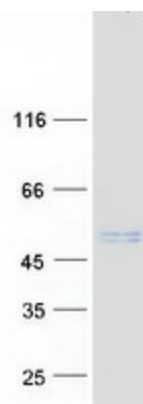
Cytogenetics: 11q12.3

RefSeq ORF: 789

Synonyms: C11orf48

Summary: This gene shares three exons in common with another gene, chromosome 11 open reading frame 98 (GeneID:102288414), but the encoded protein uses a reading frame that is different from that of the chromosome 11 open reading frame 98 gene. [provided by RefSeq, Nov 2017]

Product images:



Coomassie blue staining of purified LBHD1 protein (Cat# [TP300782]). The protein was produced from HEK293T cells transfected with LBHD1 cDNA clone (Cat# [RC200782]) using MegaTran 2.0 (Cat# [TT210002]).