

Product datasheet for TP300781L

L3MBTL2 (NM_031488) Human Recombinant Protein

Product data:

Product Type: Recombinant Proteins
Description: Recombinant protein of human l(3)mbt-like 2 (Drosophila) (L3MBTL2), 1 mg
Species: Human
Expression Host: HEK293T
Expression cDNA Clone or AA Sequence: >RC200781 protein sequence
Red=Cloning site Green=Tags(s)

MEKPRSIETPSSEPMEEEEDDLELFGGYDSFRSYNSSVGSSESSYLEESSEAEENEDREAGELPTSPLH
 LLSPGTPRSLDGSSEPAVCEMCGIVGTREAFFSKTKRFCVSCRSYSSNSKKASILARLQGPPTKKA
 KVLHKAAWSAKIGAFHLSQGTGQLADGTPTGQDALVLGFDWKGFLKDHSYKAAPVSCFKHVPLYDQWEDV
 MKGMKVEVLNSDAVLPVRYWIASVIQTAGYRVLRYEGFENDASHDFWCNLTVDVHPIGWCAINSKIL
 VPPRTIHAKFTDWKGYLMKRLVGSRTLPVDFHIKMVESMKYPFRQGMRLVVDKSVSRTRMAVVDTVIG
 GRLRLLYEDGSDDDFWCHMWSPLIHPVGSRRVGHGIKMSERRSDMAHHTFRKIYCDVAPYLFKKVRA
 VYTEGGWFEEGMKLEAIDPLNLGNICVATVCKVLLDGYLMICVDGGPSTDGLDWFCYHASSHAIFPATFC
 QKNDIELTPPKGYEAQTFNWNYLEKTKSKAAPSRLFNMDCPNHGFKVGMKLEAVDLMEPRLICVATVKR
 VVHRLLSIHFDGWDSEYDQWVDCESPDYVPGWCELTGYQLQPPVAAEPATPLKAKEATKKKKKQFGKKR
 KRIPPTKTRPLRQGSKKPLLEDDPQGARKISSEVPGEIIAVRVKEEHLDVASPKASSPELPSVENIK
 QETDD

TRTRPLEQKLISEEDLAANDILDYKDDDDKV

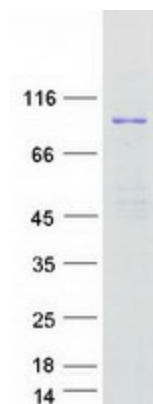
Tag: C-Myc/DDK
Predicted MW: 78.9 kDa
Concentration: >0.05 µg/µL as determined by microplate BCA method
Purity: > 80% as determined by SDS-PAGE and Coomassie blue staining
Buffer: 25 mM Tris-HCl, 100 mM glycine, pH 7.3, 10% glycerol
Preparation: Recombinant protein was captured through anti-DDK affinity column followed by conventional chromatography steps.
Note: For testing in cell culture applications, please filter before use. Note that you may experience some loss of protein during the filtration process.
Storage: Store at -80°C.



[View online »](#)

Stability:	Stable for 12 months from the date of receipt of the product under proper storage and handling conditions. Avoid repeated freeze-thaw cycles.
RefSeq:	NP_113676
Locus ID:	83746
UniProt ID:	Q969R5
RefSeq Size:	3205
Cytogenetics:	22q13.2
RefSeq ORF:	2115
Synonyms:	H-I(3)mbt-I; L3MBT
Summary:	Putative Polycomb group (PcG) protein. PcG proteins maintain the transcriptionally repressive state of genes, probably via a modification of chromatin, rendering it heritably changed in its expressibility. Its association with a chromatin-remodeling complex suggests that it may contribute to prevent expression of genes that trigger the cell into mitosis. Binds to monomethylated and dimethylated 'Lys-20' on histone H4. Binds histone H3 peptides that are monomethylated or dimethylated on 'Lys-4', 'Lys-9' or 'Lys-27'. [UniProtKB/Swiss-Prot Function]
Protein Families:	Transcription Factors

Product images:



Coomassie blue staining of purified L3MBTL2 protein (Cat# [TP300781]). The protein was produced from HEK293T cells transfected with L3MBTL2 cDNA clone (Cat# [RC200781]) using MegaTran 2.0 (Cat# [TT210002]).