

Product datasheet for **TP300778M**

OBFC1 (STN1) (NM_024928) Human Recombinant Protein

Product data:

| | |
|---------------------------------------|---|
| Product Type: | Recombinant Proteins |
| Description: | Recombinant protein of human oligonucleotide/oligosaccharide-binding fold containing 1 (OBFC1), 100 µg |
| Species: | Human |
| Expression Host: | HEK293T |
| Expression cDNA Clone or AA Sequence: | >RC200778 protein sequence Red =Cloning site Green =Tags(s) |
| | <p>MQPGSSRCEEETPSLLWGLDPVFLAFKLYIRDILDMKESRQVPGVFLYNGHPIKQVDVLGTVIGVRERD AFYSYGVDDSTGVINCICWKKLNTEVSVAAPSAARELSLTSQLKKLQETIEQTKKIEIGDTIRVRGSIRT YREEREIHATAYYK/DDPVWNIQIARMLELPTIYRKVYDQPFHSSALEKEEALSNGALDLPSTLSLSE KAKEFLMENRVQSFYQQELEMVESLLSLANQPVIHSACSDQVNFKKDTTSKAIHSIFKNAIQLLQEKGLV FQKDDGFDNLYYVTREDKDLHRKIHRIIQQDCQKPNHMEKGCHFLHILACARLSIRPGLSEAVLQQVLEL LEDQSDIVSTMEHYTAF</p> <p>TRTRPLEQKLISEEDLAANDILDYKDDDDKV</p> |
| Tag: | C-Myc/DDK |
| Predicted MW: | 41.9 kDa |
| Concentration: | >0.05 µg/µL as determined by microplate BCA method |
| Purity: | > 80% as determined by SDS-PAGE and Coomassie blue staining |
| Buffer: | 25 mM Tris-HCl, 100 mM glycine, pH 7.3, 10% glycerol |
| Preparation: | Recombinant protein was captured through anti-DDK affinity column followed by conventional chromatography steps. |
| Note: | For testing in cell culture applications, please filter before use. Note that you may experience some loss of protein during the filtration process. |
| Storage: | Store at -80°C. |
| Stability: | Stable for 12 months from the date of receipt of the product under proper storage and handling conditions. Avoid repeated freeze-thaw cycles. |
| RefSeq: | NP_079204 |

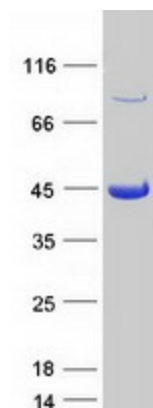


[View online »](#)

| | |
|---------------|--|
| Locus ID: | 79991 |
| UniProt ID: | Q9H668 |
| RefSeq Size: | 6483 |
| Cytogenetics: | 10q24.33 |
| RefSeq ORF: | 1104 |
| Synonyms: | AAF-44; AAF44; bA541N10.2; OBFC1; RPA-32 |

Summary: OBFC1 and C17ORF68 (MIM 613129) are subunits of an alpha accessory factor (AAF) that stimulates the activity of DNA polymerase-alpha-primase (see MIM 176636), the enzyme that initiates DNA replication (Casteel et al., 2009 [PubMed 19119139]). OBFC1 also appears to function in a telomere-associated complex with C17ORF68 and TEN1 (C17ORF106; MIM 613130) (Miyake et al., 2009 [PubMed 19854130]).[supplied by OMIM, Nov 2009]

Product images:



Coomassie blue staining of purified STN1 protein (Cat# [TP300778]). The protein was produced from HEK293T cells transfected with STN1 cDNA clone (Cat# [RC200778]) using MegaTran 2.0 (Cat# [TT210002]).