

## Product datasheet for **TP300773**

### TGF beta induced factor 2 (TGIF2) (NM\_021809) Human Recombinant Protein

#### Product data:

**Product Type:** Recombinant Proteins

**Description:** Recombinant protein of human TGFβ-induced factor homeobox 2 (TGIF2), 20 µg

**Species:** Human

**Expression Host:** HEK293T

**Expression cDNA Clone or AA Sequence:** >RC200773 protein sequence  
**Red**=Cloning site **Green**=Tags(s)

MSDSDLGEDEGLLSLAGKRKRNRGNLPKESVKILRDWLYLHRYNAYPSEQEKLSLSGQTNLSVLQICNWF  
NARRLLPDMLRKDGKDPNQFTISRRGGKASDVALPRGSSPSVLAVSVPAPTNVLSVCSMPLHSGQGE  
KPAAPFPRGELESPKPLVTPGSTLLTRAEGSPTGGLFNTPPPTPEQDKEDFSSFQLLVEVALQRAA  
EMELQKQQDPSLPLLHTPIPLVSENQ

**TRTRPLEQKLISEEDLAANDILDYKDDDDKV**

**Tag:** C-Myc/DDK

**Predicted MW:** 25.7 kDa

**Concentration:** >0.05 µg/µL as determined by microplate BCA method

**Purity:** > 80% as determined by SDS-PAGE and Coomassie blue staining

**Buffer:** 25 mM Tris-HCl, 100 mM glycine, pH 7.3, 10% glycerol

**Preparation:** Recombinant protein was captured through anti-DDK affinity column followed by conventional chromatography steps.

**Note:** For testing in cell culture applications, please filter before use. Note that you may experience some loss of protein during the filtration process.

**Storage:** Store at -80°C.

**Stability:** Stable for 12 months from the date of receipt of the product under proper storage and handling conditions. Avoid repeated freeze-thaw cycles.

**RefSeq:** [NP\\_068581](#)

**Locus ID:** 60436

**UniProt ID:** [Q9GZN2](#)



[View online »](#)

RefSeq Size: 3415

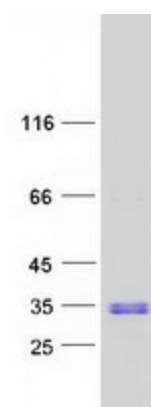
Cytogenetics: 20q11.23

RefSeq ORF: 711

**Summary:** The protein encoded by this gene is a DNA-binding homeobox protein and a transcriptional repressor, which appears to repress transcription by recruiting histone deacetylases to TGF beta-responsive genes. This gene is amplified and over-expressed in some ovarian cancers. Alternative splicing results in multiple transcript variants. A related pseudogene has been identified on chromosome 1. Read-through transcription also exists between this gene and the neighboring downstream C20orf24 (chromosome 20 open reading frame 24) gene. [provided by RefSeq, Dec 2010]

**Protein Families:** Transcription Factors

### Product images:



Coomassie blue staining of purified TGIF2 protein (Cat# TP300773). The protein was produced from HEK293T cells transfected with TGIF2 cDNA clone (Cat# [RC200773]) using MegaTran 2.0 (Cat# [TT210002]).