

Product datasheet for TP300764

ELAC2 (NM_018127) Human Recombinant Protein

Product data:

Product Type:	Recombinant Proteins
Description:	Recombinant protein of human elaC homolog 2 (E. coli) (ELAC2), 20 µg
Species:	Human
Expression Host:	HEK293T
Expression cDNA Clone or AA Sequence:	>RC200764 protein sequence Red=Cloning site Green=Tags(s)

MWALCSLLRSAAGRTMSQGRGISQAPARRERPRKDPLRHLRTREKRGPSGCSGGPNTVYLQVVAAGSRDS
GAALYVFSEFNRYLFNCGEGVQRLMQEHKLVARLDNIFLTRMHWSNVGGLSGMILTLKETGLPKCVLSG
PPQLEKYLEAIKIFSGPLKGIELAVRPHSAPEYEDTMTVYQIPIHSEQRRGKHQPWQSPERPLSRLSPE
RSSDSELNENEPHLPHGVSQRRGVRDSSLVAFICKLHLKRGNFVLKAKEMGLPVGTAAPIIAAVKD
GKSITHEGREILAEELCTPPDPGAAFVWVECPDESFIQPICENATFQRYQ GKADAPVALVHMAPASVLV
DSRYQQWMERFGPDTQHLVLNENCASVHNLRSKIQTLNLIHPDIFPLLTFRCKKEGPTLSVPMVQGE
CLLKYQLRPRREWQRDAITCNPEEFIVEALQLPNFQQSVQYERRSAQDGPAPA EKRSQYPEIIFLGTGS
AIPMKIRNVSATLVNISPDTSLLLDCGEGTFGQLCRHYGDQVDRVLGTLAAVFSHLHADHHTGLPSILL
QRERALASLGKPLHPLLWAPNQLKAWLQQYHNQCQEVLLHHISMIPAKCLQEGAEISSPAVERLISSLLR
TCDLEEFQTCLVRHCKHAFGCALVHTSGWKVVYSGDTPMCEALVRMGKDATLLIHEATLEDGLEEEAVEK
THSTTSQAISVGMRMNAEFIMLNHFQRYAKVPLFSPNFSEKVGVAFDHMKVCFGDFPTMPKLIPLKAL
FAGDIEEMEERREKRELQVRAALLSRELAGGLEDGEPQQKRAHTEEPQAKKVVRAQ

TRTRPLEQKLISEEDLAANDILDYKDDDDKV

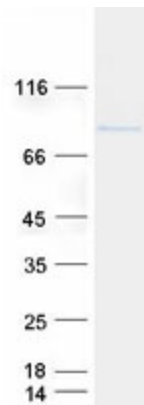
Tag:	C-Myc/DDK
Predicted MW:	92 kDa
Concentration:	>0.05 µg/µL as determined by microplate BCA method
Purity:	> 80% as determined by SDS-PAGE and Coomassie blue staining
Buffer:	25 mM Tris-HCl, 100 mM glycine, pH 7.3, 10% glycerol
Preparation:	Recombinant protein was captured through anti-DDK affinity column followed by conventional chromatography steps.
Note:	For testing in cell culture applications, please filter before use. Note that you may experience some loss of protein during the filtration process.



[View online »](#)

Storage:	Store at -80°C.
Stability:	Stable for 12 months from the date of receipt of the product under proper storage and handling conditions. Avoid repeated freeze-thaw cycles.
RefSeq:	NP_060597
Locus ID:	60528
UniProt ID:	Q9BQ52 , A0A0S2Z5M8
RefSeq Size:	3814
Cytogenetics:	17p12
RefSeq ORF:	2478
Synonyms:	COXPD17; ELC2; HPC2
Summary:	The protein encoded by this gene has a C-terminal domain with tRNA 3' trailer processing endoribonuclease activity, which catalyzes the removal of the 3' trailer from precursor tRNAs. The protein also interacts with activated Smad family member 2 (Smad2) and its nuclear partner forkhead box H1 (also known as FAST-1), and reduced expression can suppress transforming growth factor-beta induced growth arrest. Mutations in this gene result in an increased risk of prostate cancer. Multiple transcript variants encoding different isoforms have been found for this gene. [provided by RefSeq, Sep 2009]
Protein Families:	Druggable Genome, Stem cell - Pluripotency

Product images:



Coomassie blue staining of purified ELAC2 protein (Cat# TP300764). The protein was produced from HEK293T cells transfected with ELAC2 cDNA clone (Cat# [RC200764]) using MegaTran 2.0 (Cat# [TT210002]).